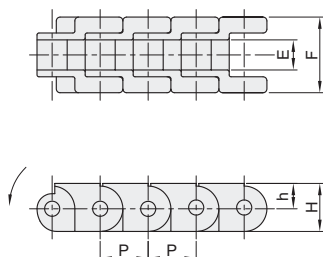


# Engineered Plastic Block Chains

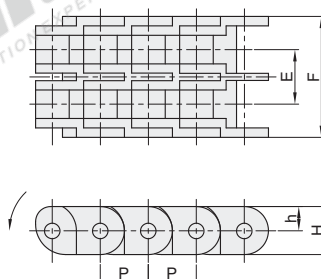
## ◀ 40 Series/60 Series

Code	Type	Material		Color	Operating Temp. (°C)
		Plate	Pins		
VMS01	40 Series/60 Series	POM	Stainless Steel 201	White	-5~65°C

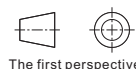
Number of Rows: 1-Row



Number of Rows: 2-Rows



ⓘ Chains only bend in the arrow direction but not in the opposite direction.



Part Number		Number of Links	Number of Rows	(P) Pitch	H	h	F	E	Allowable Tension (N)	Number of Links per Unit *
Code	Series									
VMS01	40		1 Row							
	40W	4 ~	2 Rows	12.7	12.7	6.4	32	14.25	440	240 (Circumference Length 3,048mm)
	60		1 Row	19.05	17.2	8.8	30	12.7	900	160(Circumference Length 3,048mm)

\* When the ordered number of links exceeds the given number of links per unit, the qty. of links per unit and the extra qty. of links are packaged separately.  
Ex.: For VMS01-40-300, 2 separate packages: 240 links × 1 unit + 60 links.



Please order as shown

Part Number		Number of Links
Code	Series	
VMS01	40W	4~

VMS01-40-300



Discount price	
Per	1~10
Price	100% Additional quotation



Delivery	
	12