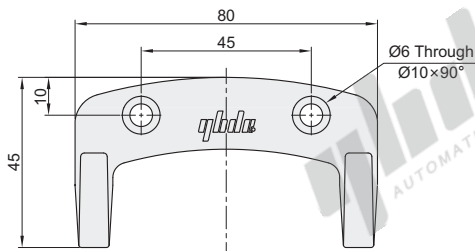


### Stainless steel hook

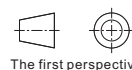
Code	Type	Material	Surface Treatment
AKR31	Stainless steel hook	Stainless steel	Polishing

Used to hang objects in extrusion frames or other places.

AKR31-H-80



Code	Weight(g/pcs)
AKR31-H-80	92

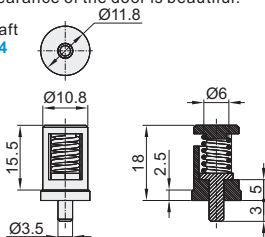


### Hidden door shaft

Code	Type	Material	Surface Treatment
AKS52	Hidden door shaft	PA	—
AKS32	Rotating seat	Stainless steel	—

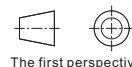
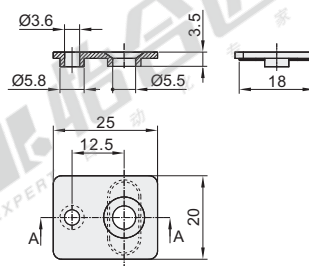
It is used for the upper and lower door shafts of the side-hung door without using hinges, and the appearance of the door is beautiful.

Hidden door shaft  
AKS52-1530-04

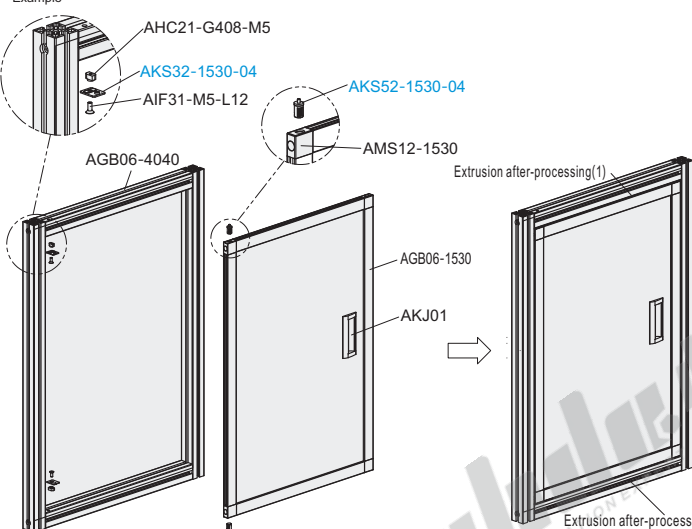


Code	Weight(g/pcs)
AKS52	3
AKS32	5.8

Rotating seat  
AKS32-1530-04

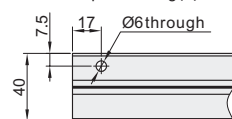


EX  
Example

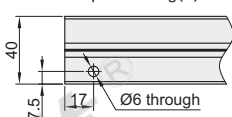


### Extrusion after-processing (processing side facing the door bolt)

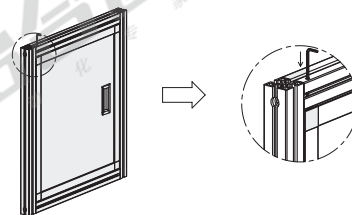
Extrusion after-processing(1)



Extrusion after-processing(2)



### Disassembly method



When choosing to install the hidden door shaft, please pay attention: Please use hexagon socket bolts to connect the outer frame extrusion. It is forbidden to use built-in connectors and angle plate to avoid interference.

Put the 3.0MM allen wrench into the processing hole, press the door shaft down to the bottom, and push the upper door frame outwards at the back of the door frame to successfully complete the removal of the door frame.



Code  
AKR31-H-80  
AKS52-1530-04  
AKS32-1530-04

