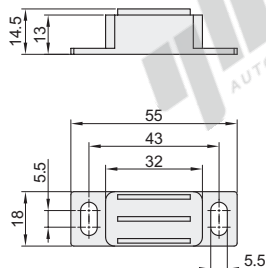


Magnetic buckle

Code	Type	Material	Surface Treatment
AKD21	Magnetic buckle	Carbon steel	Chrome

Used for locating and adsorption of doors, installed on the both inner side of aluminum extrusion doors, the locating plate is selected for use according to the extrusion dimension.

AKD21-A
AKD21-B
AKD21-C



Code	Attraction(N)	Weight(g/pcs)
AKD21-A	20	60
AKD21-B	50	
AKD21-C	70	



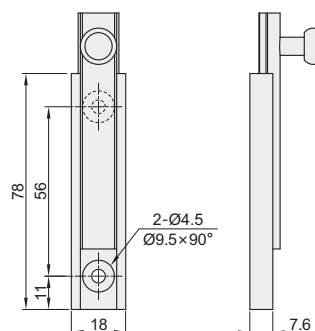
The first perspective

Pin

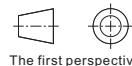
Code	Type	Material	Surface Treatment
AKE01	Pin	A6063-T5	Sandblast oxidation

Used for locating and adsorption of doors, installed on the both inner side of aluminum extrusion doors, the locating plate is selected for use according to the extrusion dimension.

AKE01



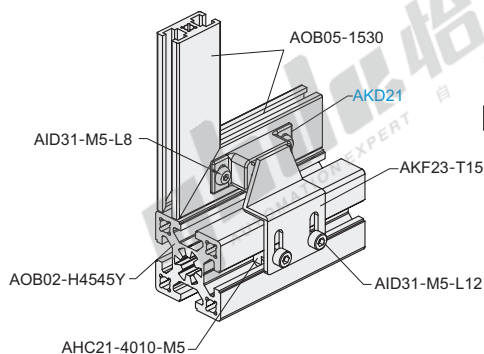
Code	Weight(g/pcs)
AKE01	35.9



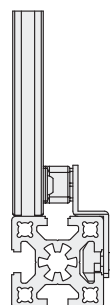
The first perspective



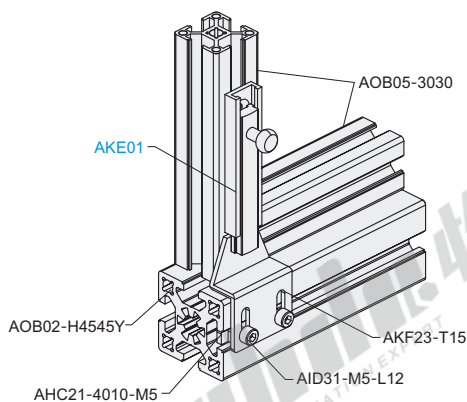
Assembly drawing



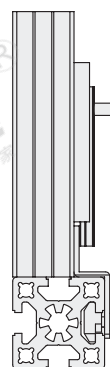
Exploded drawing



Assembly drawing



Exploded drawing



Please order as shown

Code
AKD21-A
AKD21-B
AKE01

Quotation
Way

