

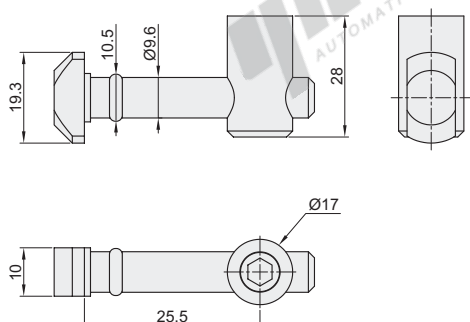
Right angle connector

Code	Type	Material	Surface Treatment
ADF21-4010	Right angle connector 0 degree	Carbon steel	Galvanized

Used for 90° internal connection between extrusions, left and right installation.



ADF21-4010-0



Code	Weight(g/pcs)
ADF21-4010-0	57

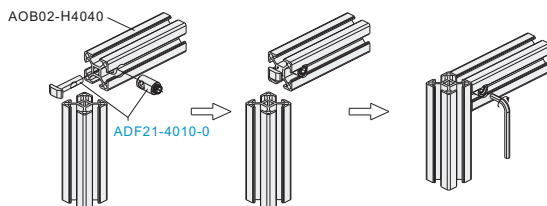


EX

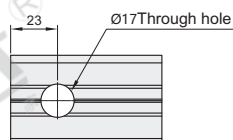
Example

Exploded drawing

Assembly drawing



Mounting hole dimension of extrusion:

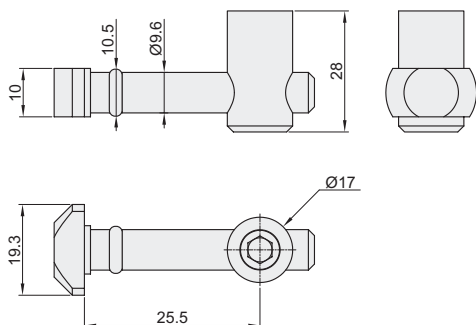


Right angle connector

Code	Type	Material	Surface Treatment
ADF21-4010	Right angle connector 90 degree	Carbon steel	Galvanized

Used for 90° internal connection between extrusions, top and bottom installation.

ADF21-4010-90



Code	Weight(g/pcs)
ADF21-4010-90	57

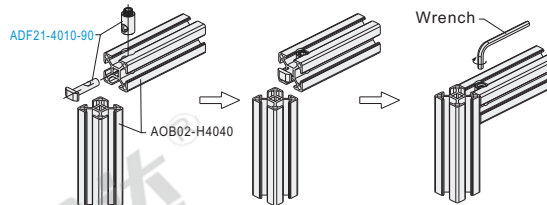


EX

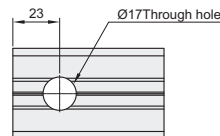
Example

Exploded drawing

Assembly drawing



Mounting hole dimension of extrusion:



Code  
ADF21-4010-0  
ADF21-4010-90

