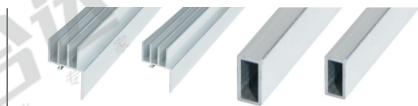


# EU Standard 30 Series Extrusion Accessories- Sealing Part

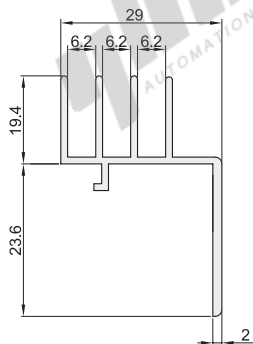
## Slide rail seat/Slide rail block

| Code       | Type             | Material | Surface Treatment/Color |
|------------|------------------|----------|-------------------------|
| AMP01-G306 | Slide rail seat  | A6063-T5 | Flat Oxidation          |
| AMP01-D    | Slide rail block |          |                         |

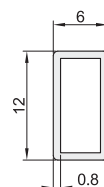
- Extrusion glass or plate used for sliding installation, stuck in along the matching extrusion part.
- No oxidation at section and processing hole.



AMP01-G306

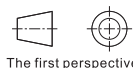


AMP01-D



| Code       | L (Minimum Unit:1) | Weight(g/m) |
|------------|--------------------|-------------|
| AMP01-G306 | 50~4000            | 563         |
| AMP01-D    |                    | 72          |

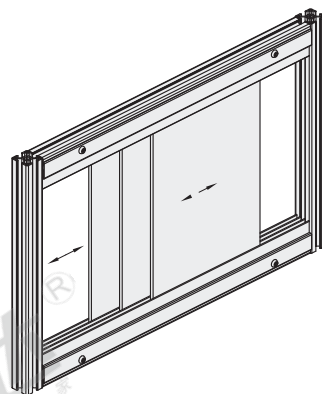
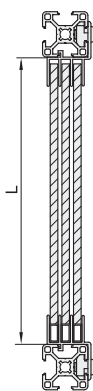
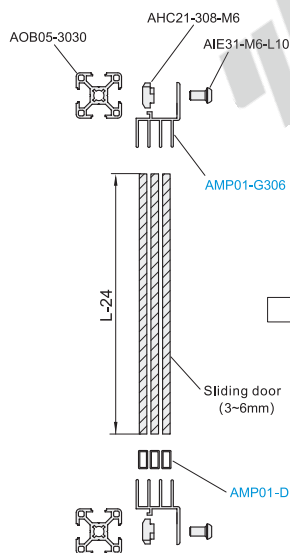
- Maximum length of product: 4 meters/piece.
- Maximum operating length: 4000mm.
- Surface treatment can be customized.



Exploded drawing

Assembly drawing

Assembly the 3D drawing



| Code       | L       |
|------------|---------|
| AMP01-G306 | 50~4000 |
| AMP01-D    |         |

AMP01-G306 -- L450

