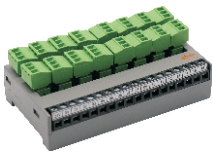


Wiring-Type, 16-Position Input Terminal Block

I/O Junction Module

Space-Saving
Terminal Blocks

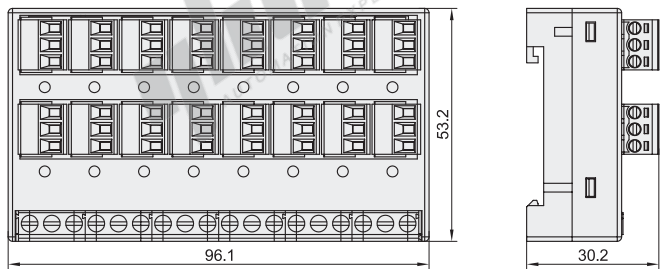


Code	Type		Indicator Light
ZHV20	I/O Junction Module	Wiring-Type 16-Position Input Terminal Block	With Light



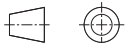
Features

- This wiring board is a terminal-output-type socket board, which is used for connecting various terminal output signals;
- Using action LED display, the action status is clear;
- Equipped with 16 groups of 3P signal output terminal, which are connected to the controller with 20P terminal block, which is convenient to remote control.



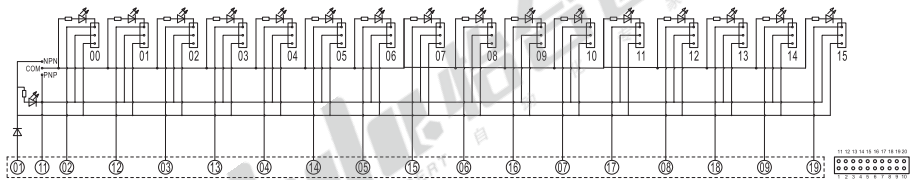
Notice

- It can be fixed with 2 M4 screws. It is recommended to use M4×16 screws, and the depth of the threaded hole should be more than 3mm.
- It can be installed on a standard 35mm DIN rail.



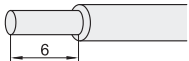
The first perspective

Wiring Diagram



Applicable Wire

Below 1.5mm²/AWG16;
Stripping Length: 6mm



Part Number		Position Number	Input Rated Current	Input Rated Voltage	Applicable Wire
Code	Specification				
ZHV20	Not Specified(NPN Type)	16	1A	DC24V	Below 1.5mm ² /AWG16; Stripping Length: 6mm
	PNP(PNP Type)				



Part Number		Position Number
Code	Specification	
ZHV20	Not Specified(NPN Type)	16
	PNP(PNP Type)	

ZHV20