

# Space-Saving Terminal Blocks

## 10-Position Japanese Conversion Terminal Module Japanese Terminal Block

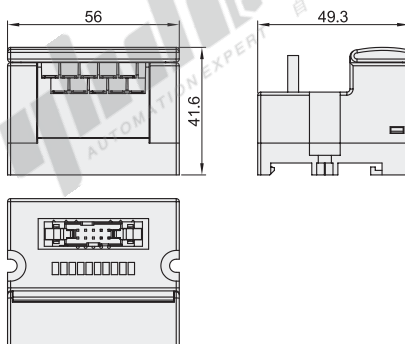
Code	Type	Indicator Light
ZHV06	Japanese Terminal Block 10-Position Japanese Conversion Terminal Module	With Light

CE



### Features

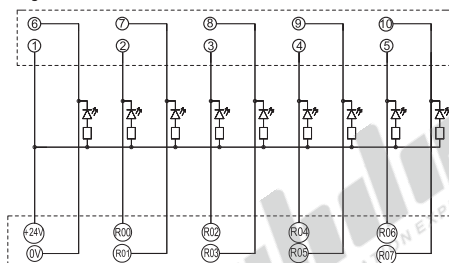
- Using 10P connectors that matches 10P terminal blocks, regardless of input/output, and it can be used in both directions;
- The transfer board is mainly used for transferring and connecting, with YHD other products of this series it can achieve high-efficiency wiring connection;
- Using action LED display, the action status is clear.



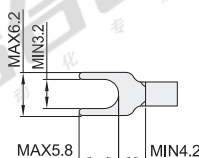
### Notice

- It can be fixed with 2 M4 screws. It is recommended to use M4×16 screws, and the depth of the threaded hole should be more than 3mm.
- It can be installed on a standard 35mm DIN rail.

### Wiring Diagram

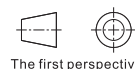
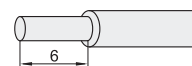


### Applicable to Crimp Terminals



### Applicable Wire

Below 1.5mm<sup>2</sup>/AWG16;  
Stripping Length: 6mm



The first perspective

Part Number		Rated Input Voltage	Rated Input Current	Applicable Wire	Applicable Wiring Harness
Code	Position Number				
ZHV06	10	DC24V	1A	Below 1.5mm <sup>2</sup> /AWG16; Stripping Length: 6mm	ZIE01-10-2



Please order as shown

Part Number	
Code	Position Number
ZHV06	10

ZHV06

### Applicable PLC

PLC Brand	Applicable PLC	Number of Terminal Blocks	Applicable Wiring Harness	Matching Wiring Quantity
PANASONIC	FP0-C16T/C16CT(In-Side)	1	ZIE01-10-2	1
	FP0-C16P/C16CP(In-Side)	1		1
	FP0-C32T/C32CT/T32CT(In-Side)	2		2
	FP0-C32P/C32CP/T32CP(In-Side)	2		2
	FP0-E16T/P(In-Side)	1		1
	FP0-E32T/P(In-Side)	1		1
	FP0-E16X	1		1
	FP0-C16T/C16CT(Out-Side)	1		1
	FP0-C16P/C16CP(Out-Side)	1		1
	FP0-C32T/C32CT/T32CT(Out-Side)	2		2
	FP0-C32P/C32CP/T32CP(Out-Side)	2		2
	FP0-E16T/P(Out-Side)	1		1
	FP0-E32T/P(Out-Side)	2		1
	FP0-E16X	1		1