

Economic Type ▶

Screw Fixing Type/DIN Rail Mounting Type, Resin Shell

Three Phase Filters

Code	Type	Wiring Method	Installation Method	Shell Material
ZHN23	Economic Type	Japanese Terminal Block	Screw Fixing Type	Resin
ZHN24		Terminal Block	DIN Rail Mounting Type	

UL VDE CQC



Feature

- Excellent electromagnetic filtering performance;
- Light weight with plastic housing;
- Ultra low leakage current;
- Touch-safe input/output terminals;
- Products have passed UL, VDE, CQC certification.

Precautions

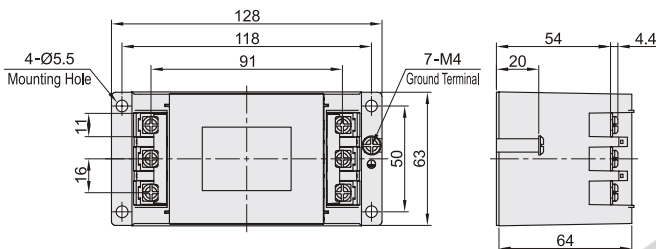
- The recommended torque of the terminal screw is 1.4~1.6N·M, if it is too large, the thread will slip.
- The flipping force of the terminal cover should not be too strong, otherwise it will be easily damaged and dropped.

Application

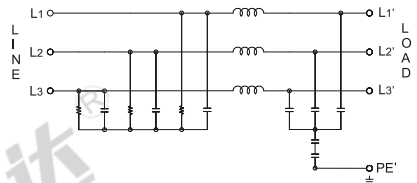
- Electric drive system;
- Power management system.

Screw Fixing Type

ZHN23

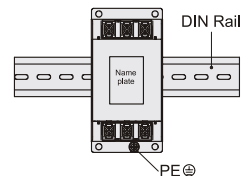
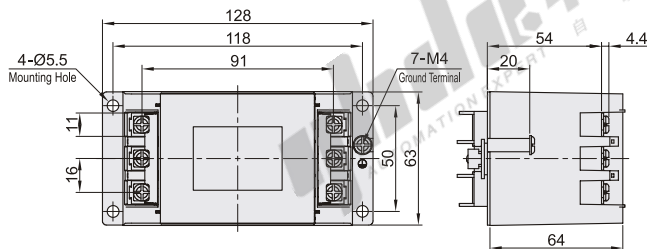


Wiring Diagram



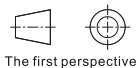
DIN Rail Mounting Type

ZHN24



Mount EMI Filter on DIN Rail

When the EMI filter is grounded through the DIN rail, Proper noise attenuation may not be achieved. Make sure to connect the protective earth (PE) of the EMI filter Connect to ground.



The first perspective

Part Number		Factory Model	Wiring Method	
Code	Rated Current(A)		In	Out
Screw Fixing Type ZHN23	10	10S5-1AH1-T (10CTAC)	Japanese Terminal Block	Japanese Terminal Block
	20	20S5-1AH1-T (10CTAC)		
	30	30S5-1AH1-T (10CTAC)		
DIN Rail Mounting Type ZHN24	10	10S5-1AH1-T (10CTACD)		
	20	20S5-1AH1-T (20CTACD)		
	30	30S5-1AH1-T (30CTACD)		

Performance Table

Code	Rated Current(A)	Rated Voltage	Operating Frequency	Operating Temperature	Maximum Leakage Current	Climate Category	Storage Temperature	Test Voltage
Screw Fixing Type ZHN23	10	500VAC	50/60Hz	-40°C~+100°C	500VAC/60Hz 5mA	25/100/21	-40°C~+100°C	Wire-Ground 2000VAC/1 Min
	20							
	30							
DIN Rail Mounting Type ZHN24	10							
	20							
	30							



Please order as shown

Part Number	
Code	Rated Current(A)
ZHN23	10
	20

ZHN23-10