

Single Phase Filters

General Type

Screw Fixing Type/DIN Rail Mounting Type, Resin Shell

Code	Type	Wiring Method	Installation Method	Shell Material
ZHN14	General Type	Japanese	Screw Fixing Type	Resin
ZHN15		Terminal Block	DIN Rail Mounting Type	

UL VDE CQC



Feature

- Open-close cover to improve working efficiency;
- Equipped with screw fixing type and DIN rail mounting type products;
- Cost-effective.

Application

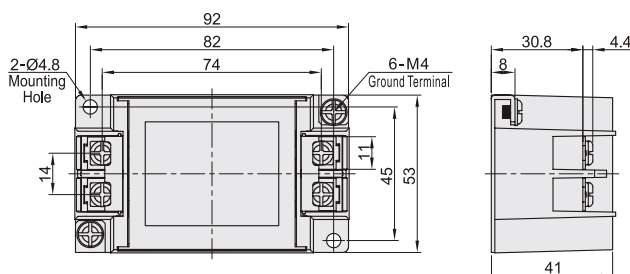
- Can meet the requirements of low leakage current in the medical industry;
- Automated Material Handling Systems.

Precautions

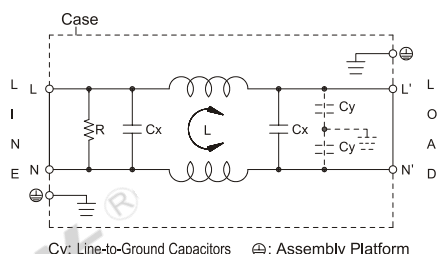
- The recommended torque of the terminal screw is 1.4~1.6NM, if it is too large, the thread will slip.
- The flipping force of the terminal cover should not be too strong, otherwise it will be easily damaged and dropped.

Screw Fixing Type

ZHN14

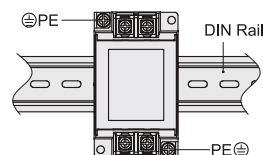
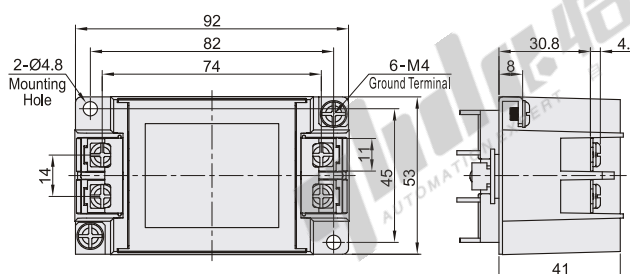


Wiring Diagram



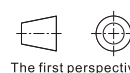
DIN Rail Mounting Type

ZHN15



Mount EMI Filter on DIN Rail

When the EMI filter is grounded through the DIN rail, Proper noise attenuation may not be achieved. Make sure to connect the protective earth (PE) of the EMI filter Connect to ground.



Part Number		Factory Model	Wiring Method	
Code	Rated Current(A)		In	Out
Screw Fixing Type ZHN14	10	10SS4-1BC2-R-Q (10CNAC472)	Japanese Terminal Block	Japanese Terminal Block
	20	20SS4-1BC2-R-Q (20CNAC472)		
	30	30SS4-1BC2-R-Q (30CNAC472)		
DIN Rail Mounting Type ZHN15	10	10SS4-1BC2-R-Q (10CNAC472D)		
	20	20SS4-1BC2-R-Q (20CNAC472D)		
	30	30SS4-1BC2-R-Q (30CNAC472D)		

Performance Table

Code	Rated Current(A)	Rated Voltage	Operating Frequency	Operating Temperature	Maximum Leakage Current	Climate Category	Storage Temperature	Test Voltage
Screw Fixing Type ZHN14	10	AC/DC250V	50/60Hz	-40°C~+100°C	250VAC/60Hz 1.0mA	25/100/21	-25°C~+100°C	Wire-Ground 2500VAC/1 Min
	20							
	30							
DIN Rail Mounting Type ZHN15	10							
	20							
	30							



Part Number	
Code	Rated Current(A)
ZHN14	10
	20

ZHN14-10