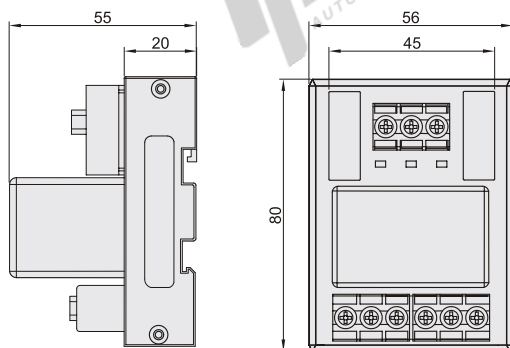


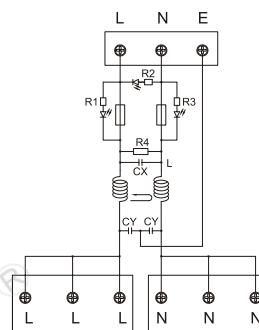
Code	Type	
ZHN01	DIN Rail Mounting Type	With Fuse

Feature

- The terminal block is specially designed for AC control circuit;
- The terminal block is equipped with two fuses, which can also be used as short-circuit protection;
- With LED display for power supply and warning LED for fuse disconnection;
- After installation, it has a three-in-one function to replace the branch terminal block, insurance tube, and power filter.

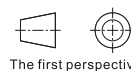


Wiring Diagram



⚠ Use 2 M4-screws to fix it on the place where the parts are installed. It is recommended to use M4×16 screws, and the depth of the screw hole is more than 3mm.

⚠ It can be installed on a standard 35mm DIN rail.



Part Number		Rated Voltage
Code	Rated Current(A)	
ZHN01	10	AC 220V
	20	



Part Number		Rated Voltage
Code	Rated Current(A)	
ZHN01	10	AC 220V
	20	

ZHN01 — 10