

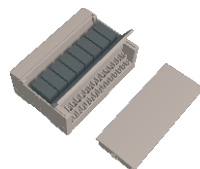
Wide Base Type, 8-Channels

Power Relay Module

Relay Modules

Code	Type	
ZHM93	Wide Base Type,	8 Channels 1 Normally Open and 1 Normally Close
ZHM94	Power Relay Module	8 Channels 2 Normally Open and 2 Normally Close

CE



Features:

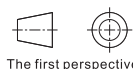
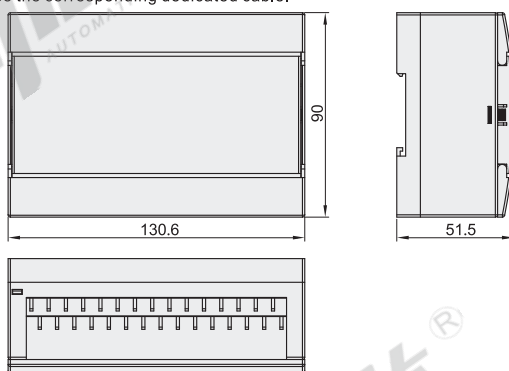
- The input/output side is equipped with a surge absorption circuit, which can effectively prolong the life of the relay contacts and reduce the Instantaneous inrush current on the slow load side;
- Input side has miswiring protection;
- This series of terminal blocks are equipped with a relay base to facilitate maintenance and update and reduce maintenance costs.

Scope of Application:

- Applied to automation equipment, processing welding equipment and other industrial and agricultural and equipment.

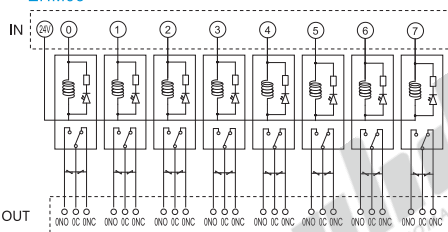
Precautions:

- Please confirm the load type and size before ordering, and choose the appropriate method to control;
- When connecting with PLC, necessarily use the corresponding dedicated cable.

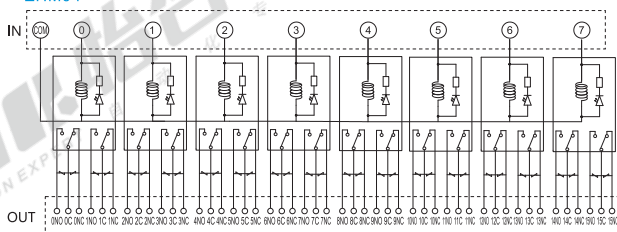


Wiring Diagram

ZHM93



ZHM94



8 Channels 1 Open 1 Closed

Part Number	Relay Module	Applicable Wire
Code		
ZHM93	8 Channels 1 Open 1 Closed	Below 1.5mm ² /AWG16 Stripping Length: 6mm

8 Channels 2 Open 2 Closed

Part Number	Relay Module	Applicable Wire
Code Spec.		
ZHM94 82	8 Channels 2 Open 2 Closed	Below 1.5mm ² /AWG16 Stripping Length: 6mm



8 Channels 1 Open 1 Closed

Part Number
Code
ZHM93
ZHM93

8 Channels 2 Open 2 Closed

Part Number
Code Spec.
ZHM94
ZHM94 — 82

Product Parameters

European Style	Main Material	PA 66V-0 Fire Rating	Certification	UL CE
Terminals	Terminal Material	Phosphor Bronze	Rated Current	10A
	Plating	Tinned	Torque	0.4NM(3.5lb-in)
Terminal Body	Main Material	PA 66V-0 Fire Rating	Certification	CE
	Cover Material	PC V-0 Fire Rating	Fixing Screw Material	SUS304
	Fasteners	PC V-0 Fire Rating	PCB Board Material	FR-4

Performance Table

Code		ZHM93	ZHM94
Contact Configuration		1C	2C
Contact Material		Silver Nickel	
Protection Level		IP40(Closed Type)	
Rated Control Capacity (Resistive Load)		12A 250V AC/12A 30V DC	8A 250V AC/8A 30V DC
Contact Resistance (Initial Value)		Below 50MΩ	
Start Time		Below 15ms	
Release Time		Below 10ms	
Withstand Voltage	Coil to Coil	5000VAC, 1 Minute	5000VAC, 1 Minute
	Between Homopolar Contacts	1000VAC, 1 Minute	1000VAC, 1 Minute
	Between Heteropolar Contacts	—	3000VAC, 1 Minute
Vibration Resistance	Durability	Frequency 10-55Hz Single Amplitude 0.75mm	
	Malfunction	Frequency 10-55Hz Single Amplitude 0.75mm	
Impact Resistance	Durability	1000m/s ²	
	Malfunction	NO Contact: 200m/s ² NO Contact: 200m/s ²	
Electrical Service Life (Rated Load)		AC Load: More Than 200,000 Times (Switching Frequency: 1800 Times/Hour) DC Load: More Than 10,000 Times (Switching Frequency: 1800 Times/Hour)	
Mechanical Service Life (No Load)		AC Load: More Than 30,000,000 Times (Switching Frequency: 1800 Times/Hour) DC Load: More Than 50,000,000 Times (Switching Frequency: 1800 Times/Hour)	
Ambient Temperature		-40~+70°C (No Freezing)	
Ambient Humidity		5-85% RH (No Condensation)	
Save Ambient Temperature		-55~+85°C	