

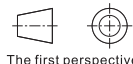
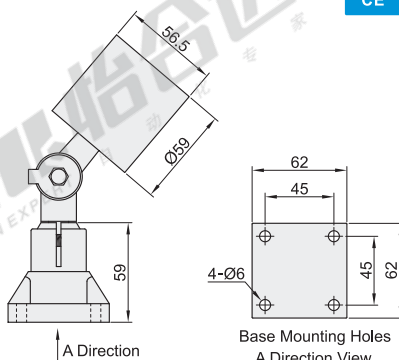
Armless/Cantilever LED Lights

Armless LED Type

Code	Type	Mounting Method
ZHE43	Armless LED Type	Panel

Feature

- The diameter of the lamp body is Ø59mm, which has a good spotlight effect;
- High-quality aluminum alloy profiles, with good shock resistance, corrosion resistance and heat dissipation performance;
- The whole lamp can achieve IP65 waterproof ability, and has oil-proof, anti-corrosion and explosion-proof functions;
- Good light concentrating effect, color rendering > 80, uniform light distribution;
- Easy installation and low maintenance rate;
- High-quality imported chips of LED light, low power consumption, high efficiency, long life;
- High-quality AC driver, intelligently protect circuit function, and prolong the service life of lamps;
- High-quality tempered glass with high light transmission and anti-explosion;
- Metal aluminum base (light source) board, lens, silicone rubber seals to maximize product quality.



Part Number	Voltage	Power (W)	Color Temperature	Luminous Flux (Lm)
Code Specification				
ZHE43 24	AC/DC24V	3	6000~6500K True White	300

Performance Table

IP Rating	IP65
Ambient Temperature	-25~55°C
Life	50000h
Extension Cord	1500mm(Standard)



Part Number	Voltage
Code Specification	
ZHE43 24	AC/DC24V

Armless/Cantilever LED Working Light

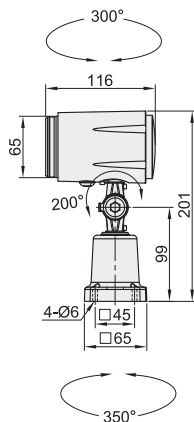
Code	Type	Brightness
JUC11	Armless LED Working Light	Highlight
JUC12	Cantilever LED Working Light	Highlight

Feature

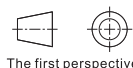
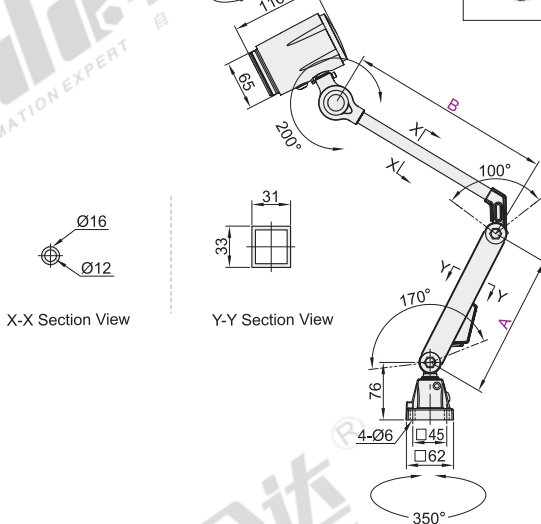
- Using layered heat dissipation structure to ensure the life of the light;
- The light adopts high power COB, good thermal conductivity and low light attenuation;
- Aluminum alloy die-casting joint bracket, durable, easy to install.

Application scenarios: where all kinds of equipment and work areas need accent lighting.

Armless LED Working Light JUC11



Cantilever LED Working Light JUC12



Armless LED Working Light

Part Number	Input Voltage	Input Current (mA)	Power (W)	Luminous Flux (Lm)
Code Color Temperature				
JUC11 A(2800~3200K)	DC24V	390	9.5	950
B(4000~4500K)				
C(6000~6500K)				

Cantilever LED Working Light

Part Number	A	B	Input Voltage	Input Current (mA)	Power (W)	Luminous Flux (Lm)
Code Color Temperature						
JUC12 A(2800~3200K)	190	270	DC24V	390	9.5	950
B(4000~4500K)	240	320				
C(6000~6500K)	290	400				
	370	480				

Armless LED Working Light

Part Number	Color Temperature
Code	
JUC11 A(2800~3200K)	
B(4000~4500K)	

JUC11 — A

Cantilever LED Working Light

Part Number	A	B
Code Color Temperature		
JUC12 A(2800~3200K)	190	270
B(4000~4500K)	240	320

JUC12 — A — A190 — B270

Performance Parameters

Installation Method	Fixed Base
IP Rating	IP 65
Drive Power	Isolated Type
Power Factor	> 0.9
Beam Angle	32°
Lamp Life	50000H
Color Rendering Index	> 82Ra
Surface Temperature	< 55°C

Environmental Requirements

Operating Temperature	-20~45°C
Storage Temperature	-40~70°C
Operating Humidity	10~90%
Storage Humidity	10~90%

