

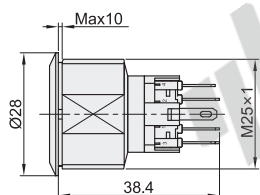
Ø25mm Mounting Hole

High Quality, Stainless Steel

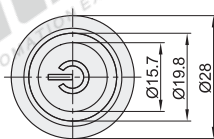
Pushbutton Switches

Code	Type	With or Without Light	Material
ZHB07	Pushbutton Switches	With Lights	Stainless Steel

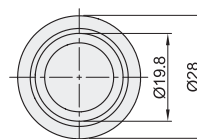
CE



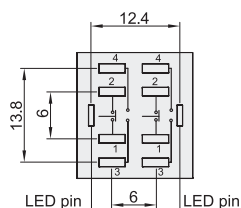
Light Type: F



Light Type: E



Terminal Layout

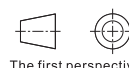


Terminal specification: 2.8×0.5;

1, 2, 3, 4 are a group of switches(1, 2 are normally closed contacts NC,

3, 4 are normally open contacts NO);

There is no distinction between positive and negative poles on the LED pin.



The first perspective

Part Number			Contact Type	Light Type	Light Color	Lighted Voltage	Mount Hole Size
Code	Action Type	Head Shape					
With Lights ZHB07	F(Reset) Z(Self-Locking)	F(Flat-Head)	11(1NO 1NC) 22(2NO 2NC)	E(Ring) F(Ring With Power Supply Logo)	R(Red)	A(AC/DC24V) V(AC/DC220~240V)	Ø25
					G(Green)		
					Y(Yellow)		
					B(Blue)		
					W(White)		

Characteristics

Contact Resistance	Insulation Resistance	Maximum Withstand Voltage	Vibration Resistance	Impact Resistance	Resistance to Soldering Heat	Working Temperature	Working Humidity	Ingress Protection Rating
≤50mΩ	≥1000MΩ	AC 2000V 50Hz, 5s	≈3.2mm Amplitude	>10g	290°C (or 60W soldering iron) no more than 3 seconds	-25°C~+55°C (no freezing) There must be air circulation around the switches	45~85%RH (no condensation)	IP67



Please order as shown

Part Number			Contact Type	Light Type	Light Color	Lighted Voltage
Code	Action Type	Head Shape				
ZHB07	F(Reset)	F(Flat-Head)	11(1NO)	E	R(Red)	A
	Z(Self-Locking)		22(1NC)	F	G(Green)	V

ZHB07 — F — F — 11 — F — R — A