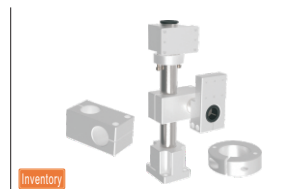
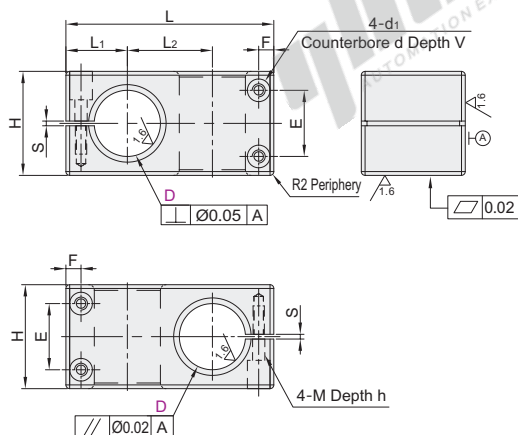


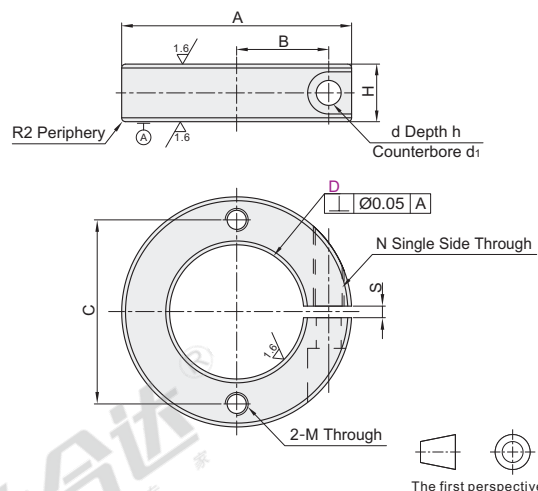
Code	Type	Material	Surface Treatment	Accessories
ZCD20	Mechanism Installation Components	A6061	Clear Anodize	White Hex Socket Head Cap Screw (4 pcs)
ZCD21				Hex Socket Head Cap Screw (1 pc)



Corner Block
ZCD20



Micro Adjustment Ring
ZCD21



Corner Block

Part Number		L	L1	L2	H	S	d	d1	V	E	F	M	h
Code	D												
ZCD20	25		92	28	36		45		15	25			
	35	+0.06 +0.01	110	32.5	45	±0.05	55	3±0.3	12	6.5	8	M6	15
	50		140	40	60		70		20	42			20

Micro Adjustment Ring

Part Number		A	B	C	H	d	d1	h	N	M	S
Code	D										
ZCD21	25		45	17	36	15	5.5	10	M5	M5	
	35	+0.06 +0.01	60	23.5	48	18	6.5	8	M6	M6	3
	50		75	31	63						±0.3

Corner Block

Part Number		L
Code	D	
ZCD20	35	+0.06 +0.01
	50	

ZCD20 — D35

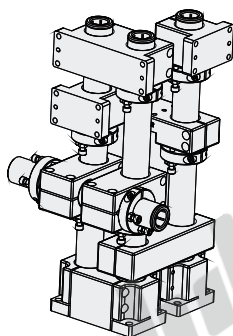
Micro Adjustment Ring

Part Number		A
Code	D	
ZCD21	35	+0.06 +0.01
	50	

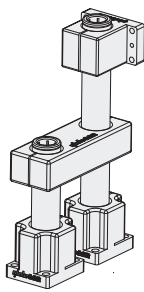
ZCD21 — D35



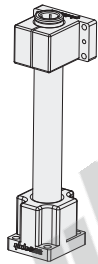
Discount price	
Per	Price
1~10	11~
100%	Additional quotation



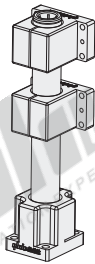
Mechanism Installation Components



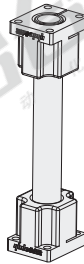
Base, Lock Block, Strengthening Block, Post



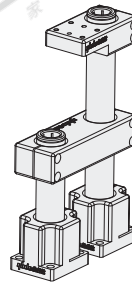
Base, Lock Block, Post, Micro Adjustment Ring



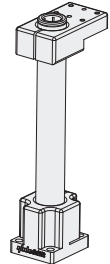
Base, Lock Block, Post



Base, Post

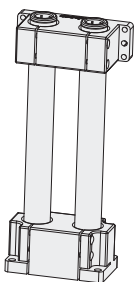


Base, Lock Block, Parallel Lock Block, Post

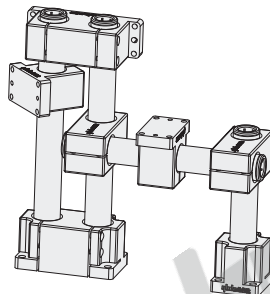


Parallel Lock Block, Base

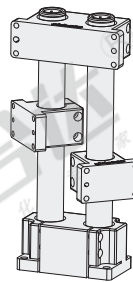
□ Brief introduction: the installation components of the mechanism can be widely used in the pneumatic manipulator, servo manipulator, common press-assembly and other mechanical components of the support installation. Base, Lock Block, Post, Strengthening Block, Parallel Lock Block can be chosen for any selection and collocation. Upright post is hard chrome plating materials, and through grinding, guarantees the excellent rigidity and smallest shape and position tolerance is only 0.05 mm, the hollow structure, to facilitate the electrical wiring, on the equipment of the whole system to promote the class a, body installation components allows even use multilayer design, can achieve maximum flexibility in terms of system design.



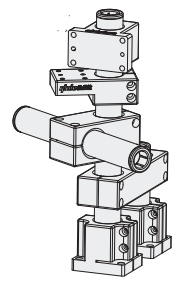
Two-Hole Base, Two-Hole Lock Block, Post



Two-Hole Base, Two-Hole Lock Block, Lock Block, Corner Block, Post



Two-Hole Base, Two-Hole Lock Block, Lock Block, Post

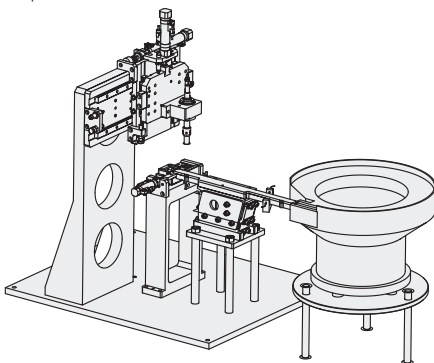


Corner Block, Lock Block, Parallel Lock Block, Post, Strengthening Block

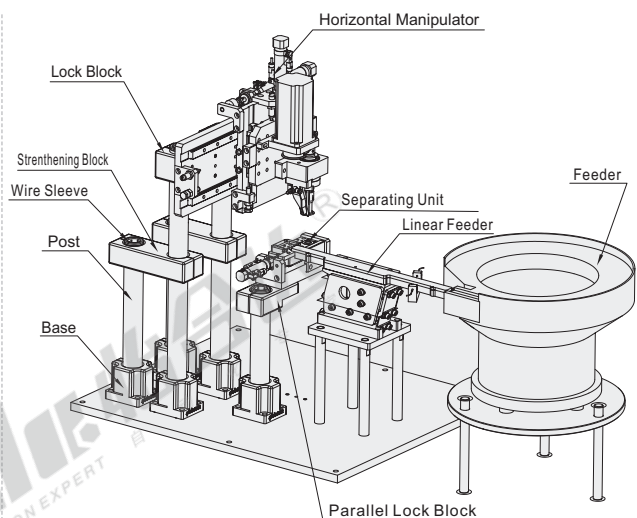
□ Simple explanation: the movement of high stiffness and no vibration occasions, accurate shape and position tolerance, even if the long post, also ensure the high precision, multiple column diameter, minimum interference contour, the whole system of multiple clamping components, can realize the whole system outline minimum interference, a variety of clamping element, can realize the drilling assembly and centering, replicable, can achieve precise Angle the element assembly. Therefore, double hole base and double hole shaft lock block from the cost of design, assembly, performance comparing to its base and lock block more advantages.



Example



□ The Traditional Way
Complex structure, not easy to debug, high cost, Complicated wiring



□ Mechanism installation component way Advantages:

- Parts compact structure, installation needs small space, beautiful appearance;
- Replace the laminated plate to reinforcement type design and installation;
- Easy to install, flexible, adjustable;
- Standardized production, cost reduction.