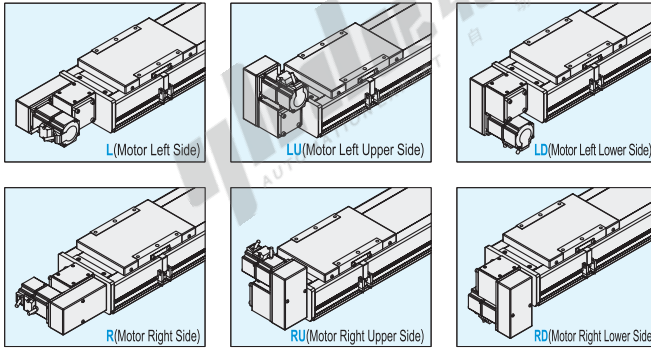
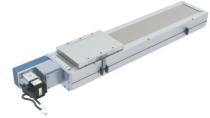


Single Axis Robots

YCTB17 Series, Base Width 170 mm Timing Belt Series, Clean Room Environment

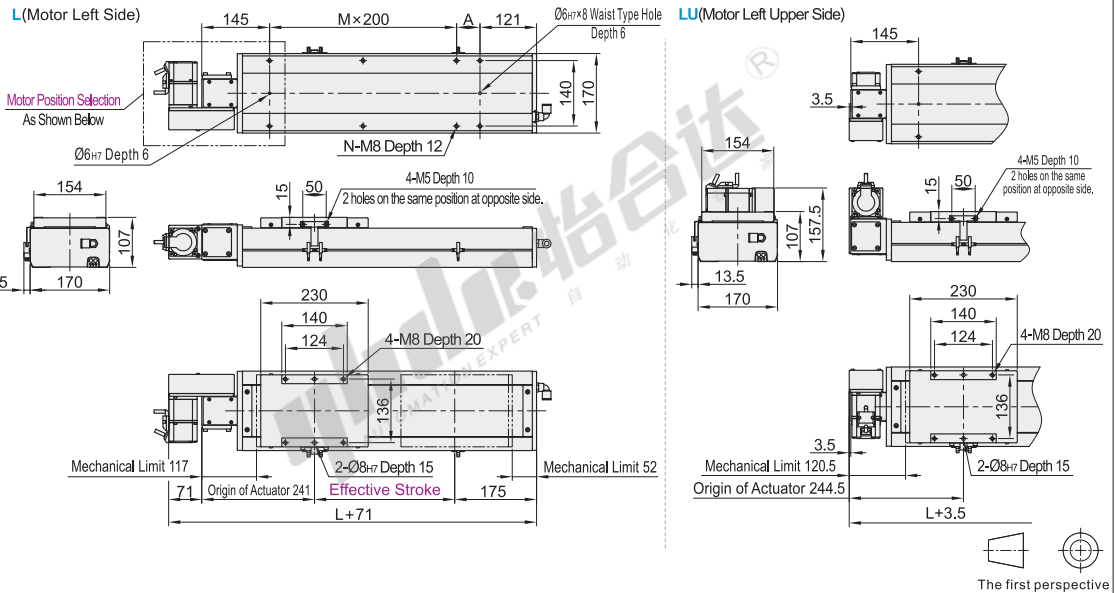
Code	Seat		Guide rail		Slider		Cover		Environment
	Material	Surface Treatment	Material	Surface Treatment	Material	Surface Treatment	Material	Surface Treatment	
YCTB17	Aluminum Alloy	Anodize	Alloy Steel	—	Aluminum Alloy	Anodize	Aluminum Alloy	Anodize	0~40°C 35~85%RH No Condensation

ⓘ This product does not include a motor, the motor must be purchased separately.



Motor Position :

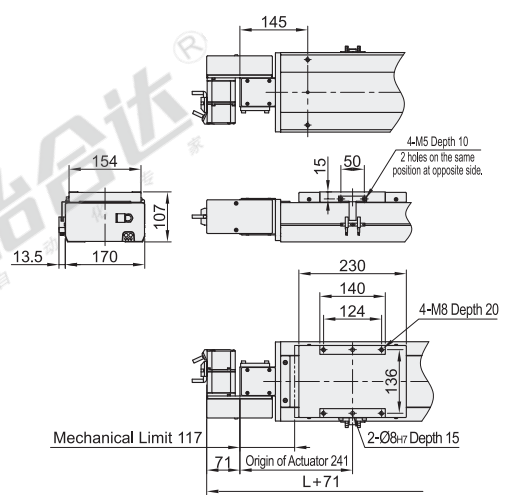
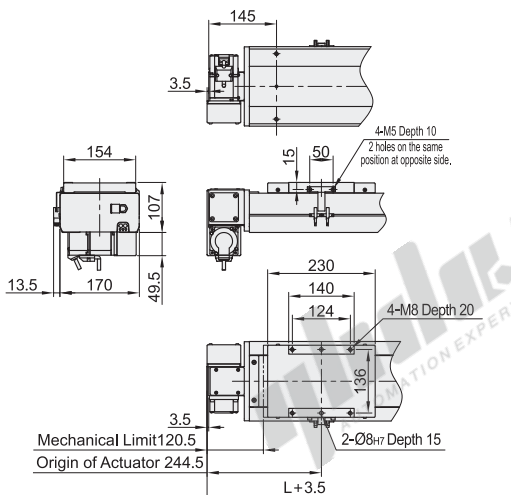
L (Motor Left Side)



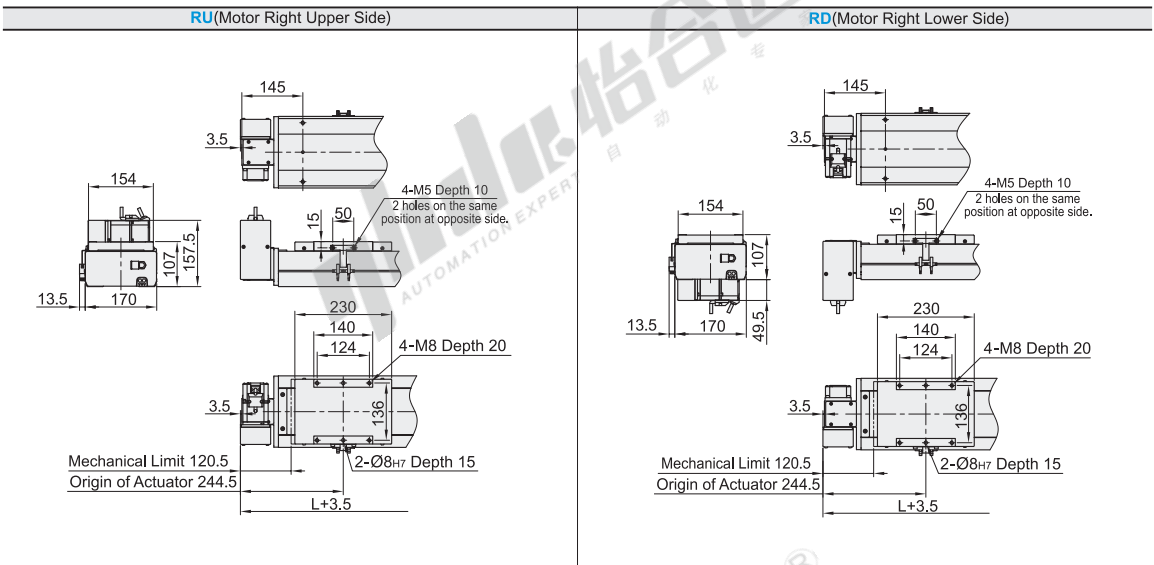
Motor Position Selection

LD (Motor Left Lower Side)

R (Motor Right Side)



Motor Position Selection



Part Number		Effective Stroke (50 mm Inc.)	Motor Position Selection	Motor Brand	Motor Output	Home Sensor	Limit Sensor
Code	Ball Screw Lead						
YCTB17	40	100 ~ 3050 Non-standard stroke can be customized	L (Motor Left Side) LU (Motor Left Upper Side) LD (Motor Left Lower Side) R (Motor Right Side) RU (Motor Right Upper Side) RD (Motor Right Lower Side)	P (Panasonic) Y (Yaskawa) M (Mitsubishi) T (Delta) H (Inovance) L (Leadshine)	40 (400W Servo)	Out Side C (Motor Side) D (Opposite Motor Side) No Sensor E (No Sensor)	Out Side 3 (1 Pc) 4 (2 Pcs) No Sensor 5 (No Sensor)

Specification

Recommend Motor Output		400W Servo		
Spec	Positioning Repeatability (mm)	±0.04		
	Ball Screw Lead (mm)	40		
	Max Speed (mm/s)	2000		
	Maximum Payload (kg)	Horizontal	45	
		Vertical	—	
	Rated Thrust (N)	200		
Effective Stroke (mm)	100~3050 (50mm Pitch)			
Parts	Belt Width (mm)	30		
	Linear Guide Rail	20x15.5 Two Branch Double Side Blocks		
	Home Sensor	Out Side	EE-SX672 (NPN)	
In Side		—		

Allowable Moment Table

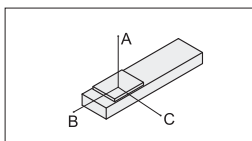
Mxd	908N.m
Myd	1034N.m
Mzd	1032N.m

The torque value in the table is the dynamic allowable torque based on the 10000km running life of the sliding table.
Torque conditions:
 $Mx/Mxd + My/Myd + Mz/Mzd \leq 1$
(Mx, My, Mz are the actual moments in each direction)

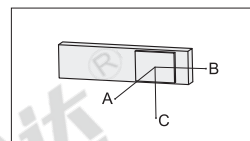
Explanation
1. The actual load shall meet the following conditions:
(a) Meet the maximum load condition in the "Specification" table.
(b) Satisfy the torque condition in the "allowable Moment Table" if beyond the conditions of use will greatly reduce the life of the slide table.
2. The data in the table is based on the rated life of 10000km.
3. The repeated positioning accuracy in the table is a unidirectional value.
4. Rated acceleration of the slide table is 0.3G, and the short-stroke slide table may not work/reach top speed.

Please contact us for OMRON Brand or PNP Sensor.

Load allowable moment table (unit: mm)



Horizontal installation	A	B	C
10kg	2942	1133	1033
20kg	1430	547	498
30kg	926	350	320
45kg	588	219	201



Wall-mounted installation	A	B	C
15kg	676	742	1933
25kg	390	428	1127
35kg	269	294	781
45kg	201	219	588

Single Axis Robots

YCTB17 Series, Base Width 170 mm Timing Belt Series, Clean Room Environment

Dimension Table

Dimension	Stroke																											
	100	150	200	250	300	350	400	450	500	550	600	650	700	750	800	850	900	950	1000	1050	1100	1150	1200	1250	1300	1350	1400	
L	516	566	616	666	716	766	816	866	916	966	1016	1066	1116	1166	1216	1266	1316	1366	1416	1466	1516	1566	1616	1666	1716	1766	1816	
A	50	100	150	200	50	100	150	200	50	100	150	200	50	100	150	200	50	100	150	200	50	100	150	200	50	100	150	
M	1	1	1	1	2	2	2	2	3	3	3	3	4	4	4	4	5	5	5	5	6	6	6	6	7	7	7	
N	6	6	6	6	8	8	8	8	8	10	10	10	10	12	12	12	12	14	14	14	14	16	16	16	16	18	18	18
Weight(kg)	16	16.8	17.6	18.4	19.1	19.9	20.7	21.5	22.2	23	23.8	24.6	25.3	26.1	26.9	27.7	28.4	29.2	30	30.8	31.6	32.4	33.2	34	34.8	35.6	36.4	

Dimension	Stroke																											
	1450	1500	1550	1600	1650	1700	1750	1800	1850	1900	1950	2000	2050	2100	2150	2200	2250	2300	2350	2400	2450	2500	2550	2600	2650	2700	2750	
L	1866	1916	1966	2016	2066	2116	2166	2216	2266	2316	2366	2416	2466	2516	2566	2616	2666	2716	2766	2816	2866	2916	2966	3016	3066	3116	3166	
A	200	50	100	150	200	50	100	150	200	50	100	150	200	50	100	150	200	50	100	150	200	50	100	150	200	50	100	
M	7	8	8	8	8	9	9	9	9	10	10	10	10	11	11	11	11	12	12	12	12	13	13	13	13	14	14	
N	18	20	20	20	22	22	22	22	22	24	24	24	24	26	26	26	26	28	28	28	28	30	30	30	30	32	32	
Weight(kg)	37.2	38	38.8	39.6	40.4	41.2	42	42.8	43.6	44.4	45.2	46	46.8	47.6	48.4	49.2	50	50.8	51.6	52.4	53.2	54	54.8	55.6	56.4	57.2	58	

Dimension	Stroke					
	2800	2850	2900	2950	3000	3050
L	3216	3266	3316	3366	3416	3466
A	150	200	50	100	150	200
M	14	14	15	15	15	15
N	32	32	34	34	34	34
Weight(kg)	58.8	59.6	60.4	61.2	62	62.8

ⓘ Not include motor weight.



Part Number	Effective Stroke (50 mm Inc.)	Motor Position Selection	Motor Brand	Motor Output	Home Sensor	Limit Sensor
Code	Stroke					
YCTB17	40	L(40-3050)	P(Panasonic) Y(Yaskawa) M(Mitsubishi)	40(300W Servo)	Out Side C(Motor side) D(Opposite Motor Side)	Out Side 3(1 Pc) 4(2 Pcs)



Discount price		
Per	1~4	5~
Price	100%	Additional quotation

Delivery	
	13

YCTB17-40-550-LU-M-40-C-4

