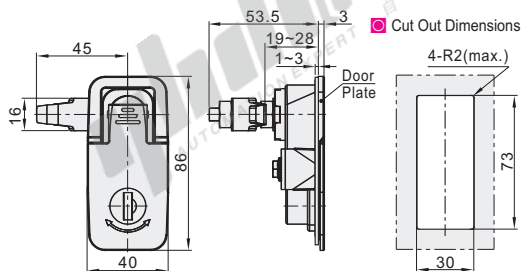


Code	Type	Cylinder Lock	Material			Surface Treatment		
			Housing	Handle	Cam	Housing	Handle	Cam
XAT21	Handle Pull To Open And Rotation Type	Have	ZDC	Q235		Pocked black power coated	Zinc plating	



Features:

- Cam 90° rotation to open or lock;
- With locking function;
- IP protection grade IP 65;
- Sealing strip internal installation.

Accessories: 2 keys.



The first perspective

Part Number	Reference Weight (kg)
Code	
XAT21	0.224



Part Number
Code
XAT21



Discount price
Per
Price
100%
1~4
5~
Additional quotation

Delivery
6