

Flat Lock

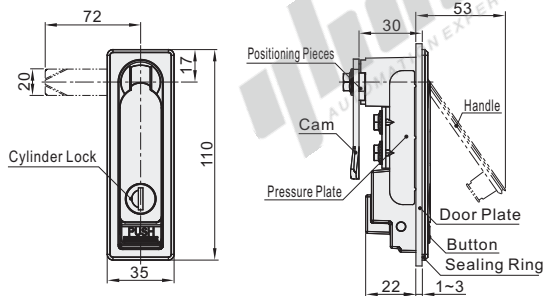
Freestanding Button/Integrated Type Button Single Point, Handle Press And Rotation Type

Freestanding Button

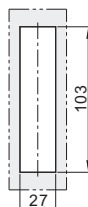
Code	Type		Material		Surface Treatment	
			Housing/Handle	Cam	Housing/Handle	Cam
XAT11	Freestanding Button	with Cylinder Lock	ZDC	Q235	Spray paint(white)	Zinc-plating
XAT12			Aluminum Alloy		Kirsite	



XAT11



Cut Out Dimensions

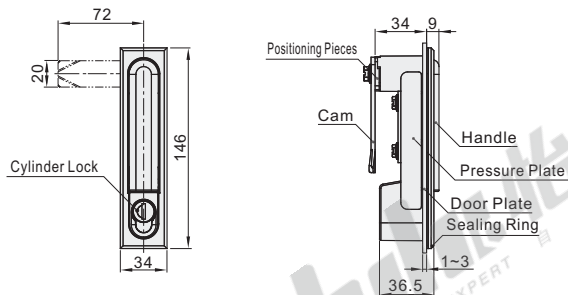


Features:

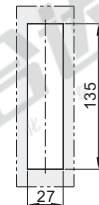
- Application: Cam 90° rotation to open or lock;
- IP protection grade IP 65;
- Sealing strip internal installation;
- It can be used by rotating to the left or right.

❗ The hole size of the lock tongue: □ 8×8.
❗ Accessories: 2 keys.

XAT12



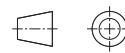
Cut Out Dimensions



Features:

- Application: Cam 90° rotation to open or lock;
- IP protection grade IP 65;
- Sealing strip internal installation;
- It can be used by rotating to the left or right.

❗ The hole size of the lock tongue: □ 8×8.
❗ Accessories: 2 keys.



The first perspective

Code	Reference Weight(kg)
XAT11	0.354
XAT12	0.408



Please order as shown

Part Number	
Code	XAT11
Code	XAT12



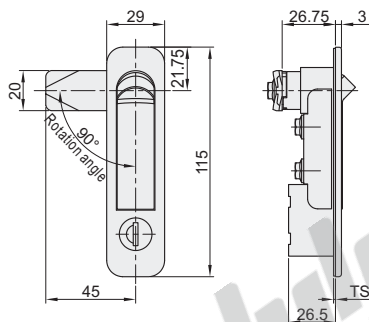
Discount price	
Per	1~4 5~
Price	100% Additional quotation



Delivery	
4	

Integrated Type Button

Code	Type		Material			Surface Treatment			Reference Weight (kg)
			Housing	Handle	Cam	Housing/Handle	Cam		
XAT46	Integrated Type Button	Single Point	ZDC5	S45C	Spray silver paint	Zinc plating			0.3
		with Cylinder Lock							



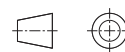
Cut Out Dimensions



Features:

- Application: Cam 90° rotation to open or lock;
- IP protection grade IP 65;
- It can be used by rotating to the left or right.

❗ The hole size of the lock tongue: □ 8×8.
❗ Accessories: 2 keys.



The first perspective



Please order as shown

Code
XAT46



Discount price	
Per	1~4 5~
Price	100% Additional quotation



Delivery	
2	