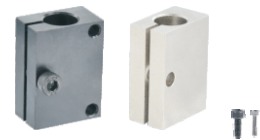


Post Clamps

For Photoelectric Sensor Mounting

Code	Type	Material		Surface Treatment	Accessories (Screw)
		GB	Equiv.		
RDX01	Through Hole	Q235	SS400	Black Oxide	TAC01
RDX02				Electroless Nickel Plating	TAC21
RDX11		LD31	A6063	Black Anodize	TAC01
RDX12				Clear Anodize	TAC21
RDX21	Tapped Hole	0Cr18Ni9	SUS304	—	TAC21
RDX41		Q235	SS400	Black Oxide	TAC01
RDX42				Electroless Nickel Plating	TAC21
RDX51		LD31	A6063	Black Anodize	TAC01
RDX52				Clear Anodize	TAC21
RDX61		0Cr18Ni9	SUS304	—	TAC21



Accessories (Hex Socket Head Cap Screws)

D	RDX01/11/41/51	RDX02/12/21/42/52/61
10	Code M4×12 1pcs	Code M4×12 1pcs
12	Code M5×16 1pcs	Code M5×16 1pcs
15	Code M5×16 1pcs	Code M5×16 1pcs

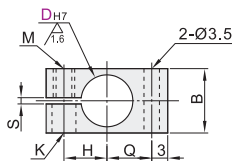
Sensor Mounting Screw

D	RDX01/11	RDX02/12/21	RDX41/42/51/52/61
10	TAC01-M3-L30 2pcs	TAC21-M3-L30 2pcs	
12	TAC01-M3-L35 2pcs	TAC21-M3-L35 2pcs	TAC21-M2.6-L14 2pcs
15	TAC01-M3-L35 2pcs	TAC21-M3-L35 2pcs	

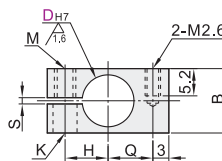
① If there is requirement of rust prevention, please choose stainless steel materials or electroless nickel-plated products firstly.

② Due to the different production batches of products, nickered products may have fine sandblasting, which does not affect the size and function.

Through Hole
RDX01/02/11/12/21

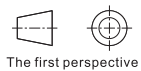


Tapped Hole
RDX41/42/51/52/61



6.3

① D_{H7} tolerance is the tolerance before processing the open slot.



Through Hole

Part Number			A	B	H	Q	S	M	K
Code	D _{H7}								
RDX01 RDX02 RDX11 RDX12 RDX21	10	+0.015 0	22	13	8	7.8		M4	4.5
	12	+0.018 0	25	16	9.5	8.8	1.2~1.8	M5	5.5
	15		28	19	11	10.3			

Tapped Hole

Part Number			A	B	H	Q	S	M	K
Code	D _{H7}								
RDX41 RDX42 RDX51 RDX52 RDX61	10	+0.015 0	22	13	8	7.8		M4	4.5
	12	+0.018 0	25	16	9.5	8.8	1.2~1.8	M5	5.5
	15		28	19	11	10.3			

① Through Hole

Part Number	Code	D _{H7}
RDX01	10	
RDX02	12	
RDX11	15	

RDX02—D10

Please order as shown

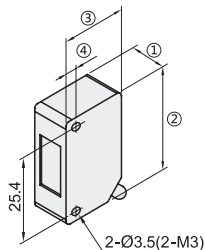


Discount price		
Per	1~4	5~
Price	100%	Additional quotation



Example of Photoelectric Sensor Dimensions

Manufacturer	Part number	①	②	③	④
OMRON	E3Z-T61	10.8	31	20	3
KEYENCE	PZ-M51	10.8	34.8	18.6	2.6
SUNX	CX-411	11.2	31	20	3



List of Mountable Sensors

Manufacturer	Detection Method	Part Number
OMRON	Through Beam Type	E3Z-T6□(K/A)/T8□(K)
	Reflective Type (Retroreflective / Diffused)	E3Z-R6□/R8□/D6□/D8□
KEYENCE	Through Beam Type	PZ-M5□(P)
	Reflective Type (Retroreflective / Multi)	PZ-M6□(P)/M1□(P)/M3□(P)/V1□(P)/V3□(P)
SUNX	Through Beam Type	CX-41□(P)
	Reflective Type (Mirror / Diffused)	CX-48□(P)/49□(P)/42□(P)

① Some external dimensions may differ from the above photoelectric sensor, however the mounting pitch is the same.