

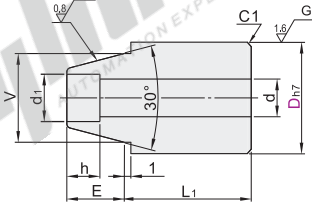
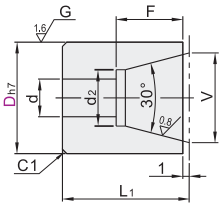
Tapered Pin Locating Block Sets

- Counterbored/Short Type
- Standard

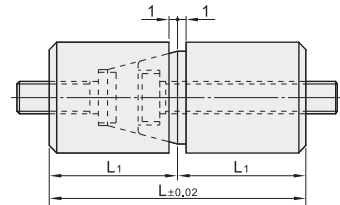
Code	Type	Material		Hardness
		GB	Equiv.	
PAP01	Counterbored	Cr12MoV	SKD11	56~60HRC
PAP11	Short Type			
PAP21	Standard			



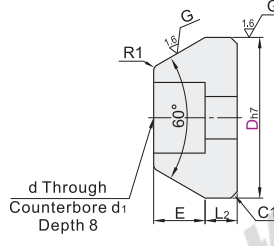
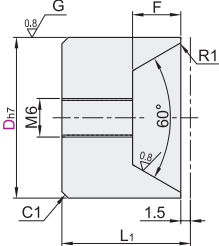
Counterbored
PAP01



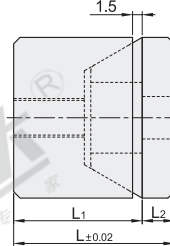
Mounting Dimensions



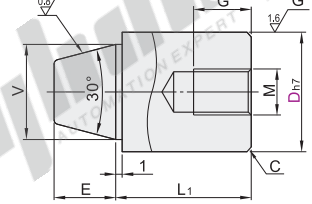
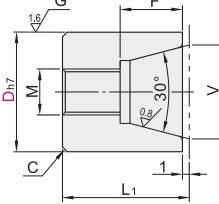
Short Type
PAP11



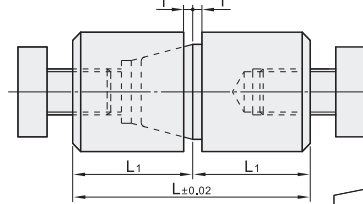
Mounting Dimensions



Standard
PAP21



Mounting Dimensions



The first perspective

Counterbored

Code	Part Number		L	L1	F	V	E	d1	d	d2	h	Applicable Screw
	D_h7	D_h7										
PAP01	20		44	22	16	16	8	8	4.5	10	5	M4
	25	⁰ / _{-0.021}	50	25	19	20	9	11	6.6	13.5	7	M6
	30		60	30	23	25	12	14	9	17	9	M8

Short Type

Code	Part Number		L	L1	L2	E	F	d	d1	Applicable Screw
	D_h7	D_h7								
PAP11	25	⁰ / _{-0.021}	25	20	5	8	7.5	6.6	11	M6

Standard

Code	Part Number		L	L1	G	F	V	E	M	C
	D_h7	D_h7								
PAP21	12		32	16	8		8	4.5	M4	
	12C	⁰ / _{-0.018}	24	12	5					
	16		32	16	10	7	10	5.5	M5	0.5
	16C		26	13	7					
	20		44	22	12		12	7.5	M6	
	20C		36	18	8	11	16	9.5	M8	1
	25		50	25	16					
	25C	⁰ / _{-0.021}	42	21	12	12	20	11.5	M10	
	30		60	30	20	14				
	30C		50	25	15					

Counterbored

Part Number		L	L1
Code	D		
PAP01	20	44	22
	25	50	25

PAP01—D25



Discount price	
Per	1~4 5~
Price	100% Additional quotation



Delivery	
	6

