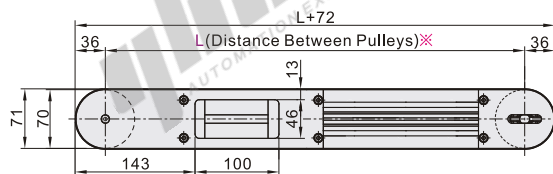
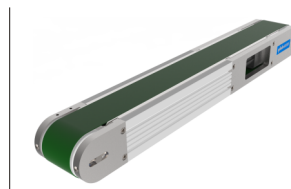


# Built-in Motor ▶ Flat Belt Conveyors

## 3-Groove Frame (Pulley Dia. 70mm)

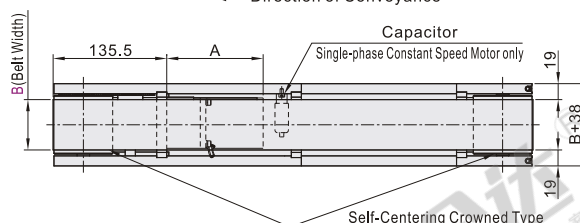
Code	Type	Material		Surface Treatment	
		Frame	Pulley Holder	Frame	Pulley Holder
KPQ01	Built-in Motor	Aluminum		Anodize	Clear Anodize

① Features: Crowned pulleys suppress meandering. The unit height has been reduced by half with the motor integrated in the frame.



① If reverse transmission or forward and reverse transmission is required, please be sure to remark that, if not specified, our company will debug according to the standard direction.

← Direction of Conveyance

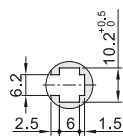
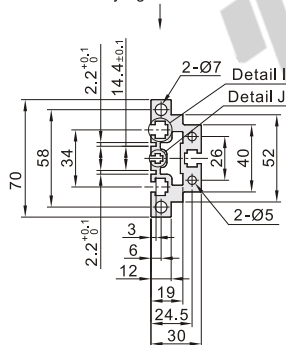


✖ When  $L \leq 1000$ , each slot has four (4) nuts inserted. When  $L > 1000$  each slot has six (6) nuts inserted. When counterbores for inserting nuts are required, please select from optional processing.

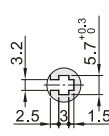
✖ M6 frame slot can be used for: rear-mounted locking nut [AHL22-206-M3 /M4/M5](#).

① The dimensions in the diagram are for Belt Specifications H (1mm thick.). Take note that belt thickness varies by Belt Specifications.

Frame Cross Section - Enlarged Carrying Surface Side



Detail I (for M6)



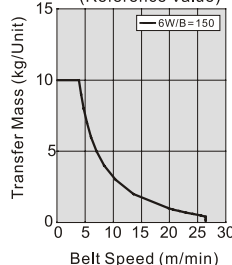
Detail J (M3)

① Compatible with GB/T 6170 standard hex nuts.



The first perspective

Conveying Capacity (Reference Value)



① The chart shows the conveying capacity under horizontal conditions.

① When a speed-adjustable motor is selected, the conveying capacity does not increase due to the speed reduction during use.

① In the case of cumulative conveying (only applicable to belts for sliding use), the conveying capacity is 1/2 of the above data.

Gearhead Reduction Ratio

Gearhead Reduction Ratio	Belt Speed (m/min)	
	50Hz	60Hz
15	18.3	22
18	15.2	18.3
25	11	18.3
30	9.1	13.1
36	7.6	9.1
50	5.5	6.6
60	4.5	5.5
75	3.6	4.4
90	3	3.6
100	2.7	3.3
120	2.3	2.7
150	1.8	2.2
180	1.5	1.8

① May decrease depending on load condition.

① This conveying speed table refers to domestic motors (1250 rpm).

① The adjustment scale should not be lower than 60 for long-term use.

If the adjustment scale is too low, the motor torque will decrease and the motor will be easily overloaded. Meanwhile, if the motor speed is lowered, the kinetic energy of the motor will be converted into heat energy, which will cause the motor to overheat. (The conveying capacity comparison table refers to the conveying capacity with a scale of 100).

Motor Specifications

Output Power	Motor		Reduction Ratio	A
	Specification	Manufacturer		
6W	Variable Speed Motor	Domestic	5~18	130
			20~180	130
		Panasonic	5~18	111
			20~180	118

# Flat Belt Conveyors

## Built-in Motor 3-Groove Frame (Pulley Dia. 70mm)

Part Number		L 5 mm Inc.	Motor					Motor Manufacturer Selection
Code	B		Output Power(W)	Voltage(V)	Specification	Gearhead Reduction Ratio	Belt Specification	
KPQ01	60	415~2000	6	TA220 Single-Phase	SCM Variable Speed Motor	15 18 25 30 36 50 60 75 90 100 120 150 180	L(Economy Type:Yellow, PVC) M(Economy Type:Black Anti-static, PU) K(Economy Type:Dark Green, PVC) A(General Purpose, Green) B(General Purpose, White) C(For Sliding, Green) D(For Sliding, White) E(Static Conductive, Black) F(Food Grade, White) P(Oil Resistant, Green) H(Non-Stick Food Grade, White) J(No Belt)	T(Domestic Brands) S(Panasonic Motor)  ⓘ Panasonic Motor is discontinued, Delivery time is unstable.
	100							
	150							
				NV No Motor	NM No Motor	NH No Gearhead		W (No Motor, Gearhead)

ⓘ When "No motor, gearhead" is selected, the motor mounting hole pitch will vary depending on the motor's power rating.

ⓘ When "No motor, gearhead" is selected, this unit will be delivered unassembled.



Please order  
as shown

Part Number		L 5 mm Inc.	Motor					Motor Manufacturer Selection
Code	B		Output Power(W)	Voltage(V)	Specification	Gearhead Reduction Ratio	Belt Specification	
KPQ01	60 100 150	415~2000	6	TA220 Single-Phase	SCM Variable Speed Motor	15 18 25 30 36 50 60 75 90 100 120 150 180	A(General Purpose, Green) B(General Purpose, White) C(For Sliding, Green) D(For Sliding, White)	T(Domestic Brands) S(Panasonic Motor)

KPQ01—B100—L1000—6—TA220—SCM—15—A—T

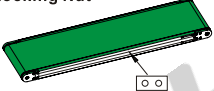
### Optional Processing

Part Number		L 5 mm Inc.	Motor					Motor Manufacturer Selection	Optional Processing Code
Code	B		Output Power(W)	Voltage(V)	Specification	Gearhead Reduction Ratio	Belt Specification		
KPQ01	60 100 150	415~2000	6	TA220 Single-Phase	SCM Variable Speed Motor	15 18 25 30 36 50 60 75 90 100 120 150 180	A(General Purpose, Green) B(General Purpose, White) C(For Sliding, Green) D(For Sliding, White)	T(Domestic Brands) S(Panasonic Motor)	MB( )

KPQ01—B100—L1000—6—TA220—SCM—15—A—T—MB3

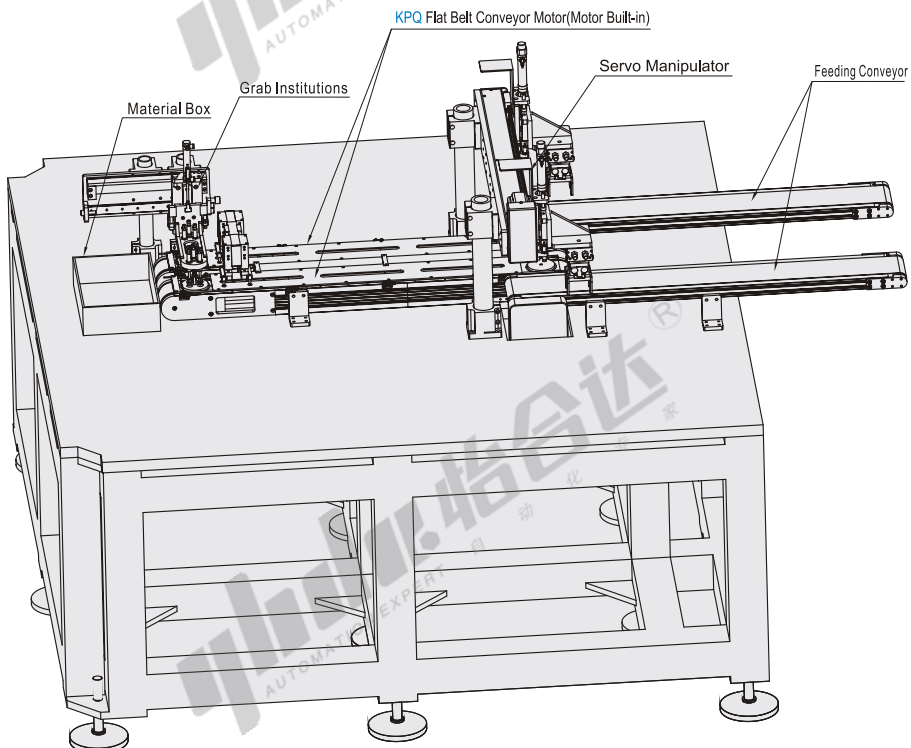


Optional  
processing

Code	MB( )	
Spec.		
	Attached Rear-mounted Locking Nut	Ordering Code MB3 ⓘ Please specify the number of Attached Rear-mounted Locking Nut. For example, MB3 represents 3 nuts per slot.



Example



ⓘ KPQ Series of motor built-in conveyor used in the narrow space of the occasion.