

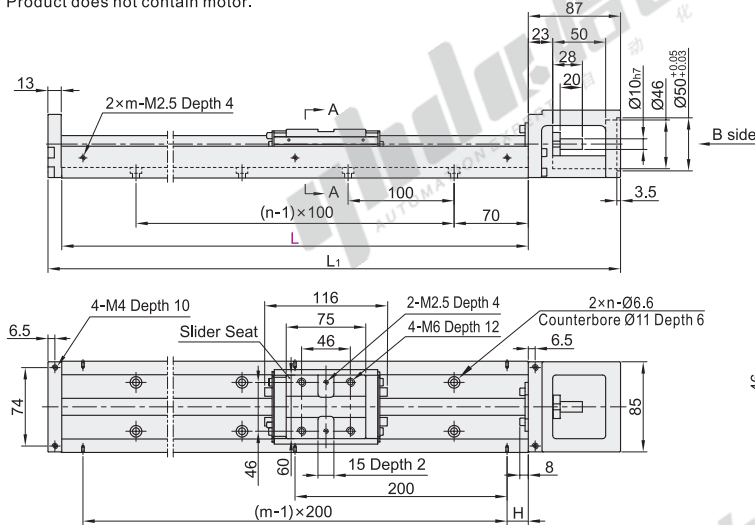
Economical Type KK Single Axis Drivers

86 Series, Standard Type Without Cover



Code	Type	Ball Screw Lead	Slider Material	Base		Motor Support	
				Material	Hardness	Material	Surface Treatment
KK86A	Servo Motor Type	10/20	Alloy Steel	Chrome Molybdenum Steel	58-62 HRC	Aluminum Alloy	Black Anodize

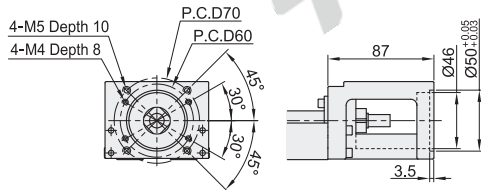
Product does not contain motor.



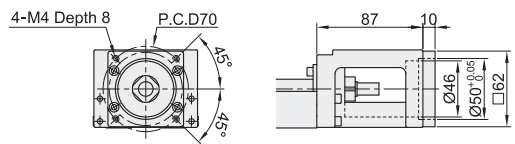
Part Number Code	Rail Length No. L	Number of Slider	Accuracy Grade	Motor Connecting Support Selection	Limit Switch/ Installation Rail Selection	Ball Screw Shaft Dia.	Lead	Length of Workbench L ₁	H	n	m	Maximum Stroke		Weight(kg)		
												Single Slider	Dual Slider	Single Slider	Dual Slider	
KK86A	1510	340				10	10	440	70	3	2	210	100	5.7	6.5	
	1520															
	1510	440				10	10	540	20	4	3	310	200	6.9	7.7	
	1520															
	1510	540	1 (Single Slider)	C (Normal Grade)	F0	No Sign. (No)	10	10	640	70	5	3	410	300	8.0	8.8
	1520															
	1510	640	2 (Dual Slider)	P (Precision Grade)	F1	S0 (Switch Rail Only)	15	10	740	20	6	4	510	400	9.2	10.0
	1520															
	1510	740					10	10	840	70	7	4	610	500	10.4	11.2
	1520															
	1510	940					10	10	1040	70	9	5	810	700	11.6	12.4
	1520															

Motor connection support and motor correspondence table

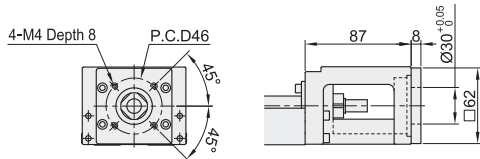
Motor Connection Support : F0



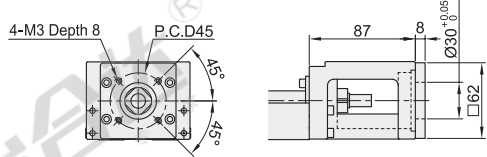
Motor Connection Support : F1



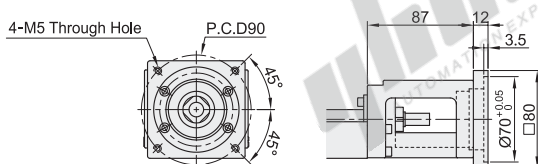
Motor Connection Support : F2



Motor Connection Support : F3



Motor Connection Support : F4



The first perspective

Code	Motor Type	Motor Connection Support	Applicable Brands	Output Power
KK86A	Servo Motor	F0	Delta Mitsubishi Inovance	200W 400W
		F1	Panasonic	200W 400W
		F2	Delta Mitsubishi Inovance	100W
		F3	Panasonic	100W
		F4	Panasonic	750W

Limit Switch/Installation Switch Rail Dimension Table

S0(Switch Rail)

S1(Switch Rail+ SX671)

S2(Switch Rail+ SX674)

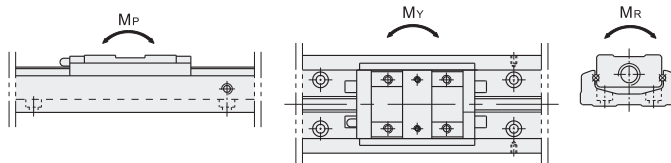
Code	Limit Switch/Installation Rail	a	b	c	d
KK86A	S1(Switch Rail+ SX671)	63.5	76.7	8	18
	S2(Switch Rail+ SX674)	59	65.7		

Accuracy Grade

Code	Rail Length L	Repeated Positioning Accuracy		Positioning Accuracy		Running Parallelism		Maximum Starting Torque(N-cm)	
		Normal Grade	Precision Grade	Normal Grade	Precision Grade	Normal Grade	Precision Grade	Normal Grade	Precision Grade
KK86A	340	±0.01	±0.003	—	0.025	—	0.015	10	15
	440								
	540								
	640								
	740								
940				0.030		0.020		17	
					0.040		0.030		25

Allowable Static Torque

Code	Accuracy Grade	Allowable Static Torque					
		Linear Guide Rail					
		Pitching M _P (N-m)		Yawing M _Y (N-m)		Rolling M _R (N-m)	
		Single Slider	Dual Slider	Single Slider	Dual Slider	Single Slider	Dual Slider
KK86A	Normal Grade	622	3050	622	3050	1507	3014
	Precision Grade						



Allowable Load

Code	Ball Screw Lead	Accuracy Grade	Basic Load Rating(N)			
			Ball Screw		Linear Guide Rail	
			C(Dynamic)	Co(Static)	C(Dynamic)	Co(Static)
KK86A	10	Normal Grade	3377	5625	31458	50764
		Precision Grade	3744	6243		
	20	Normal Grade	2107	3234		
		Precision Grade	2410	3743		



Part number	Rail Length	Number of Slider	Accuracy Grade	Motor Connecting Support Selection	Limit Switch/ Installation Rail Selection
Code	No.	L			
KK86A	1510	340	1 (Single Slider) 2 (Dual Slider)	C (Normal Grade) P (Precision Grade)	No Sign: (No) S0 (Switch Rail Only) S1 (Switch Rail+ SX671)
	1510	440			
	1520				
	1520				

KK86A - 1510 - L340 - 1 - C - F1 - S1



Discount price		
Per	1~9	10~
Price	100%	Additional quotation



Delivery
8

1 Normal Grade, Single Slider(1~5 pcs)