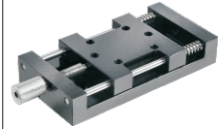


# X-Axis, Standard ▶ Push Screw

## Simplified Adjustments



Code	Type	Main Body	Shaft	Spring	Push Screw	Accessories
HHJ01	Standard	Standard Handle	A6063 Black Anodize	SUS304 56HRC~	SUS631 S45C Electroless Nickel Plating	Hex Socket Head Cap Screw

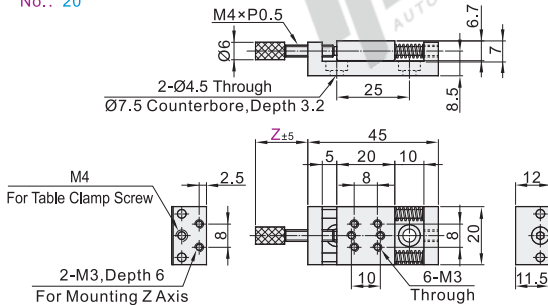
### Accessories

No.	Accessories (Screws)	Qty.	Material
20	Hex Socket Head Cap Screw	2 pcs	SUS304
40	Hex Socket Low Head Cap Screw	4 pcs	SCM435
60			

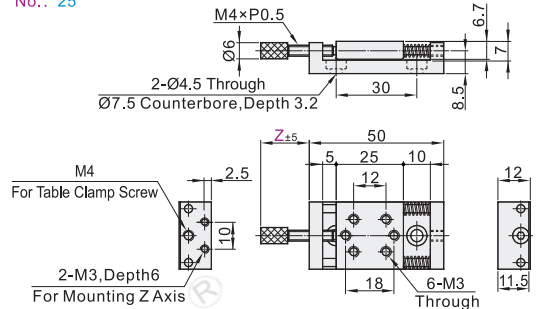
### Advantages:

The price is relatively affordable, and it is suitable for occasions where the requirements for adjustment accuracy are not too high. The use of springs can inhibit the generation of backlash.

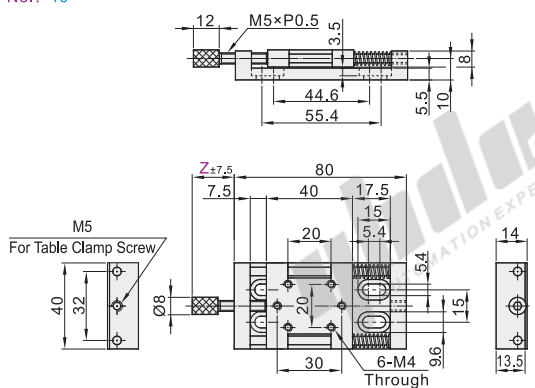
No.: 20



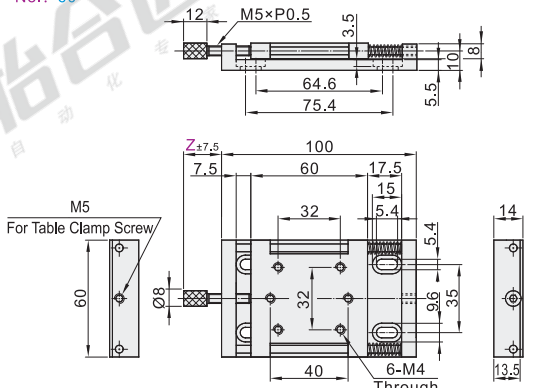
No.: 25



No.: 40



No.: 60



The first perspective

### Accuracy Standards

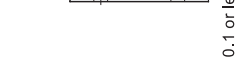
❗ Not recommended for precision positioning.

❗ The stroke can be set according to the maximum displacement of the spring.

❗ The use of overtravel may lead to lower accuracy.

❗ When it is used in the vertical direction, it is recommended to add the opposite position set screw.

❗ Use appropriate opposite set bolts can fix the sliding table.



0.15 or less

Part Number		Z	Stage Surface (mm)	Travel Distance (mm)	Load Capacity(N)		The amount of movement for one turn of the knob (mm)	Weight (g)
Code	No.				Horizontal	Vertical		
HHJ01	20	18 28 38	20×20	±5	9.8	2	0.5	38
	25		25×25					55
	40	19.5 30 40	40×40	±7.5	14.7	8		104
	60	19.5 40 60	60×60					193

❗ Travel Distance Per Handle Rotation: 0.5 mm.



Please order as shown

Part Number	Code	No.	Z
HHJ01	20	25	18 28 38

HHJ01 — 20 — Z28



Discount price	Per	1~9	10~
Price	100%	Additional quotation	



Delivery	10
----------	----