

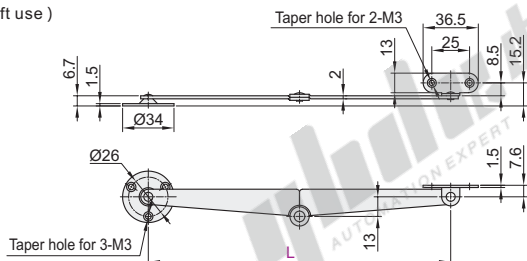
Automatic Locking Type Rotation Latches

Use left and right/with Catch Mechanisms
For General Doors, 3-Point Stopper

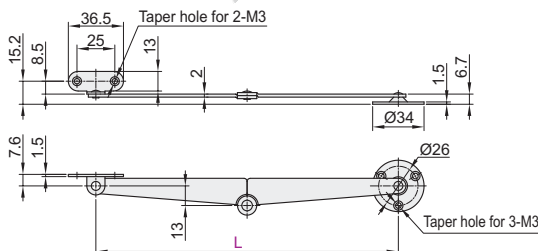
Use left and right

Code	Type	Material	Surface Treatment
HFX06	3-Point Stopper Use left and right	SUS304	—

L (Left use)



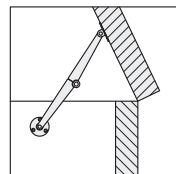
R (Right use)



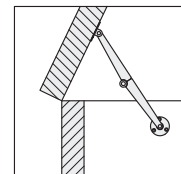
EX
Example



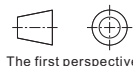
Left use example



Right use example



- When closing the door, operate while pulling the center rivet (※ in up figure) toward you.
- When installing this stay to sheet metal, be sure to perform thread relief processing (chamfering) on the mounting surface side (cabinet side). In this way, screw head will not protrude when the stay is fixed.



The first perspective

Part Number	Right & Left	Reference Weight (kg/pcs)
Code L	L (For Left Side) R (For Right Side)	0.07
HFX06 200		



Part Number	Right & Left
Code L	L (For Left Side) R (For Right Side)
HFX06 200	

HFX06—L200—L



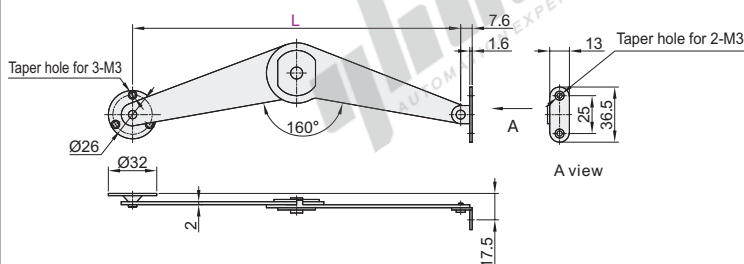
Discount price
Per 1~4 5~
Price 100% Additional quotation

Delivery
2

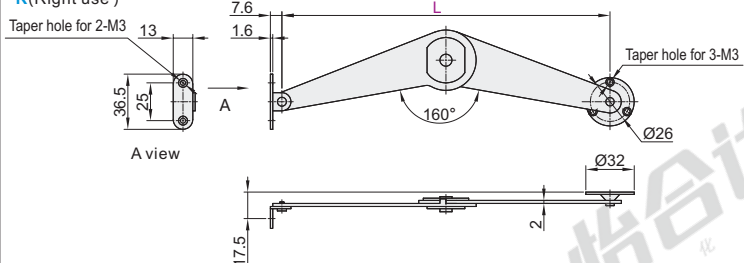
with Catch Mechanisms

Code	Type	Material	Surface Treatment
HFX08	3-Point Stopper with Catch Mechanisms	Q235	Chrome Plating

L (Left use)



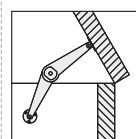
R (Right use)



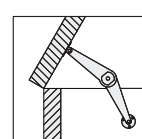
EX
Example



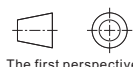
Left use example



Right use example



- Catch mechanism may not work, depending on door weight.
- When installing this stay to sheet metal, be sure to perform thread relief processing (chamfering) on the mounting surface side (cabinet side). In this way, screw head will not protrude when the stay is fixed.



The first perspective

Part Number	Right & Left	Reference Weight (kg/pcs)
Code L	L (For Left Side) R (For Right Side)	0.13
HFX08 217		



Part Number	Right & Left
Code L	L (For Left Side) R (For Right Side)
HFX08 217	

HFX08—L217—L



Discount price
Per 1~9 10~
Price 100% Additional quotation

Delivery
2