

Use left and right

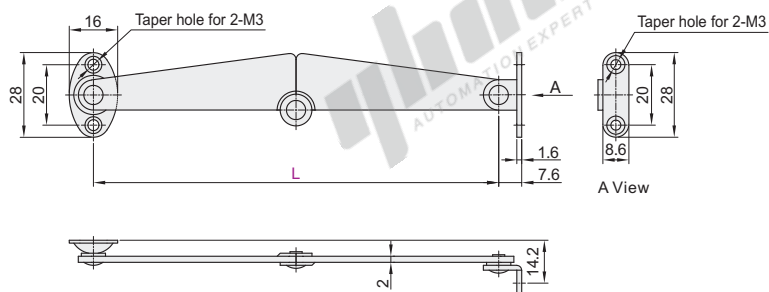
For General Doors, 2-Point Stopper

Automatic Locking Type Rotation Latches

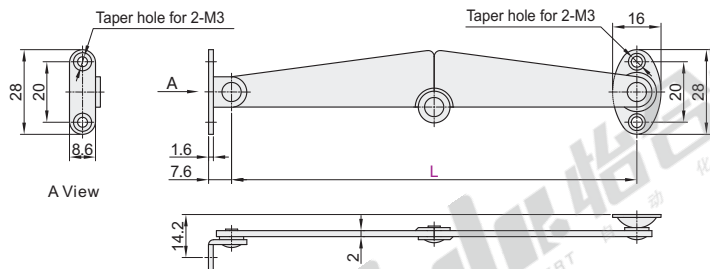
Code	Type	Material	Surface Treatment
HFX03	2-Point Stopper	SPCC	Chrome Plating

[!] The drawing is for left-hand use.

L(Left use)

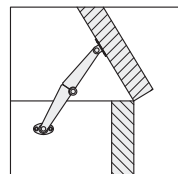


R(Right use)

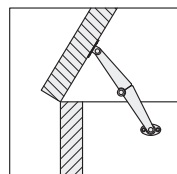


EX
Example

Left use example



Right use example



[!] When closing the door, operate while pulling the centre rivet (✕ in up figure) toward you.

[!] when installing this stay to sheet metal, be sure to perform thread relief processing (chamfering) on the mounting surface side (cabinet side). In this way, screw head will not protrude when the stay is fixed.



The first perspective

Code	Part Number	Right & Left	Reference Weight (kg/pcs)
HFX03	L 106	L (For Left Side)	0.02
	R 134	R (For Right Side)	0.03



Please order as shown

Part Number	Right & Left
Code L	Right & Left
HFX03	L 106 R 134

HFX03—L106—L



Discount price
Per 1~4 5~
Price 100% Additional quotation



Delivery
6