

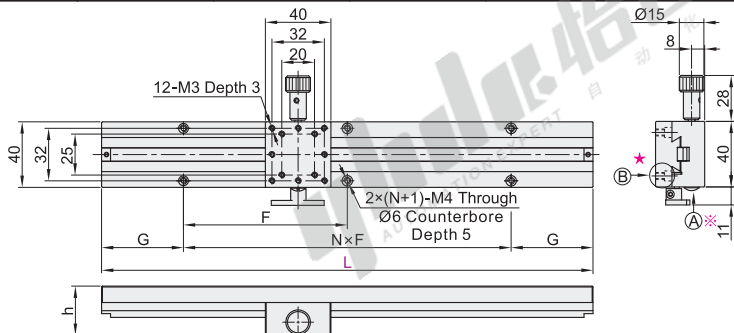
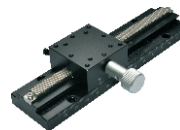
# Dovetail Groove Guide Stages

## X-Axis/Z-Axis

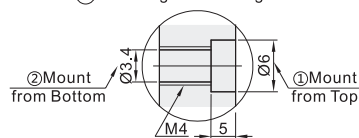
Standard, Long Stroke, Rack & Pinion Long Stroke

### X-Axis

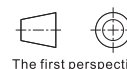
Code	Type	Drive Direction	Main body Material	Rack Material	Surface Treatment
EJR11	Rack & Pinion Long Stroke	X-Axis	Aluminum Alloy	Brass	Black Anodize



### ★(B) Mounting Hole Enlarged View



- ※ By turning the preload adjustment screw (A) clockwise with a flathead screw driver, the stage slides slowly. By turning counterclockwise, the slides quickly and smoothly.
- ❗ The product can choose two blocks, but the stroke should reduce the length of the corresponding blocks, and the total length of the slider cannot be greater than its own stroke.
- ❗ When the flatness of the parts installed on the bottom or top of the sliding table is insufficient, they may not give full play to the due performance of the product (flatness reference standard: Within 10µm).



Part Number	Code	L	G	N×F Number of Hole Rows	h	Travel Distance (mm)	Travel per Rotation (mm)	Minimum Graduation (mm)	Parallelism (µm)	Load Capacity (kgf)	Body Weight (kg)
EJR11	100	12.5	1×75		±30				50		0.25
	150		1×100		±55						0.33
	200	25	2×75		±80						0.39
	250		2×100		±105						0.46
	300		2×100		±130	18	0.1			5	0.53
	400	50	6×50		±180						0.69
	500		8×50		±230						0.91



Part Number	Code	L	G
EJR11	100	12.5	
	150	25	

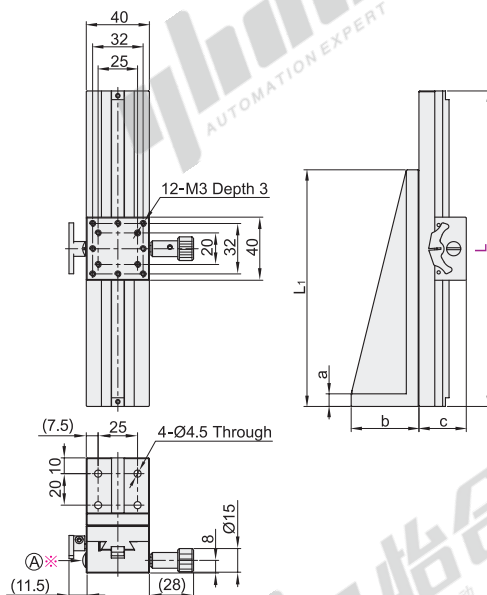


Per	1~9	10~
Price	100%	Additional quotation

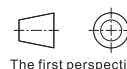


### Z-Axis

Code	Type	Drive Direction	Main body Material	Rack Material	Surface Treatment
EJS11	Rack & Pinion Long Stroke	Z-Axis	Aluminum Alloy	Brass	Black Anodize



- ※ By turning the preload adjustment screw (A) clockwise with a flathead screw driver, the stage slides slowly. By turning counterclockwise, the slides quickly and smoothly.
- ❗ The product can choose two blocks, but the stroke should reduce the length of the corresponding blocks, and the total length of the slider cannot be greater than its own stroke.



Part Number	Code	L	L <sub>1</sub>	a	b	c	Travel Distance (mm)	Travel per Rotation (mm)	Minimum Graduation (mm)	Load Capacity (N)	Body Weight (kg)
EJS11	100	100					±30				0.46
	150						±55				0.54
	200	150	8	43	30		±80				0.6
	250						±105	18	0.1	24.5	0.67
	300	200					±130				0.74
	400	300					±180				1.05
	500	400	10	45	35		±230				1.18



Part Number	Code	L	L <sub>1</sub>
EJS11	100	100	
	150	150	



Per	1~9	10~
Price	100%	Additional quotation

