

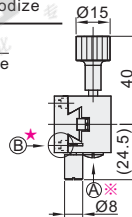
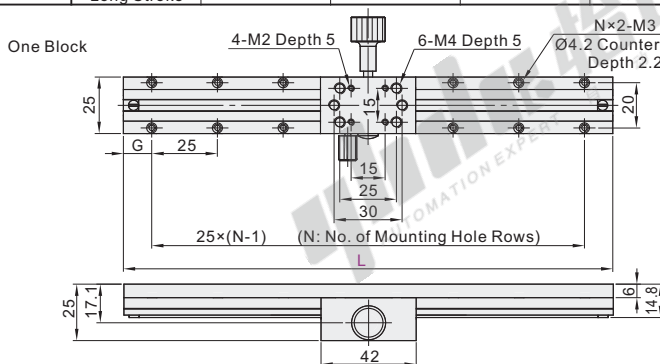
X-Axis/Z-Axis

High Precision, Long Stroke, Rack & Pinion Long Stroke

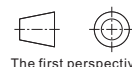
Dovetail Groove Stages

X-Axis

Code	Type	Drive Direction	Main body Material	Rack Material	Surface Treatment
EJR01	Rack & Pinion Long Stroke	X-Axis	Aluminum Alloy	Brass	Black Anodize

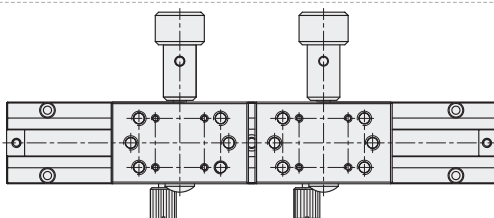


① When the flatness of the parts installed on the bottom or top of the sliding table is insufficient, they may not give full play to the due performance of the product (flatness reference standard: Within 10μm).

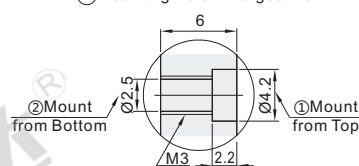


The first perspective

Two Blocks



★(B) Mounting Hole Enlarged View



① Mount from Top: Use M2 Screws.
② Mount from Bottom: Use M3 Screws.

※ By turning the preload adjustment screw (A) clockwise with a flathead screw driver, the stage slides slowly. By turning counterclockwise, the slides quickly and smoothly.
① The product can choose two blocks, but the stroke should reduce the length of the corresponding blocks, and the total length of the slider cannot be greater than its own stroke.

Part Number	N	Number of	Travel	Travel per	Minimum	Straightness	Parallelism	Load	Body
Code	L	Hole	Distance	Rotation	Graduation	(μm)	(μm)	Capacity	Weight
		Rows	(mm)	(mm)	(mm)			(kgf)	(kg)
EJR01	50	2	±15	18	0.1	30	40	3.0	0.12
	70	3	±25						0.14
	100	4	±40						0.17
	150A	6	±65			40	50		0.33
	200	8	±90						0.39
	200A								0.45
									0.51



Please order as shown

Part Number	Code	L
EJR01	100	150
EJR01-L150		

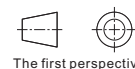
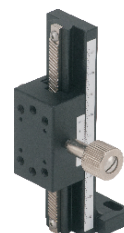
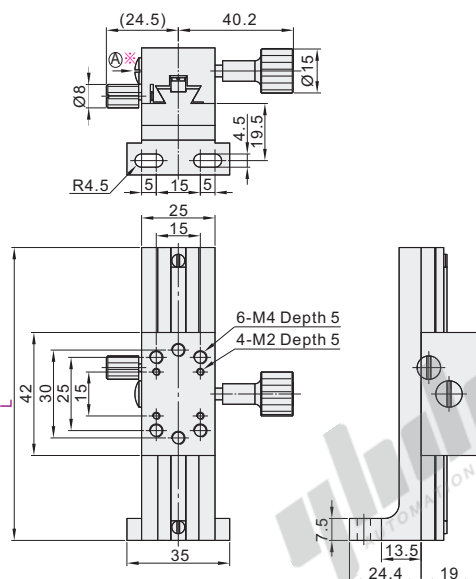


Discount price
Per 1~4 5~
Price 100% Additional quotation

Delivery
10

Z-Axis

Code	Type	Drive Direction	Main body Material	Rack Material	Surface Treatment
EJS01	Rack & Pinion Long Stroke	Z-Axis	Aluminum Alloy	Brass	Black Anodize



The first perspective

Part Number	Travel	Travel per	Minimum	Load	Body
Code	L	Distance	Rotation	Capacity	Weight
		(mm)	(mm)	(kgf)	(kg)
EJS01	50	±15	18	1.5	0.14
	70	±25			0.16
	100	±40			0.24
	150	±65			



Please order as shown

Part Number	Travel
Code	Distance
	(mm)
EJS01	±40
EJS01-L150	±65



Discount price
Per 1~9 10~
Price 100% Additional quotation



Delivery
10

※ By turning the preload adjustment screw (A) clockwise with a flathead screw driver, the stage slides slowly. By turning counterclockwise, the slides quickly and smoothly.