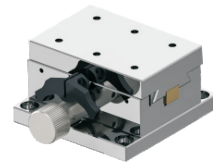


# X-Axis, High Load Capacity ▶

High Precision, Rack & Pinion Feed

## Dovetail Groove Stages

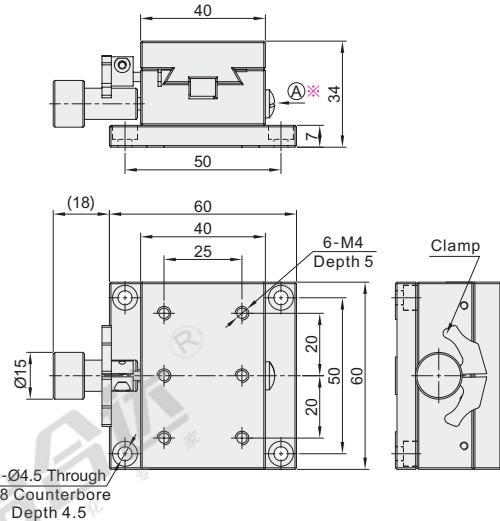
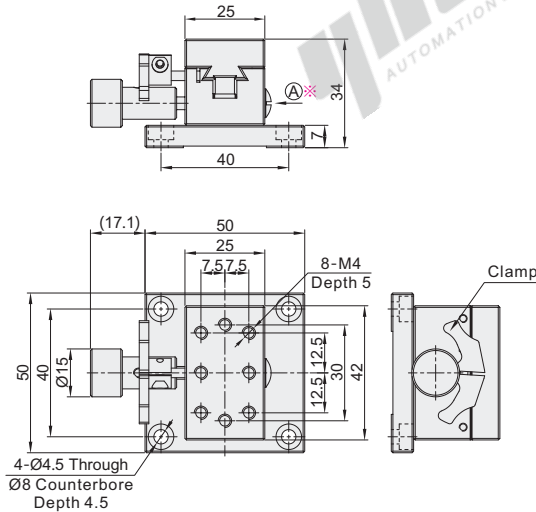


Code	Type		Drive Direction	Material		Surface Treatment
				Main body	Rack	
EJN31	Rack & Pinion Feed	High Load Capacity	X-Axis	S45C	Brass	Electroless Nickel Plating

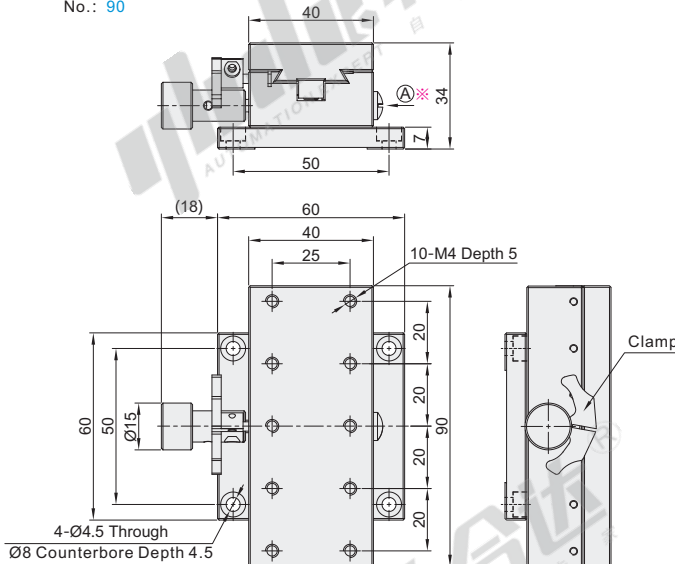
① When the flatness of the parts installed on the bottom or top of the sliding table is insufficient, they may not give full play to the due performance of the product (flatness reference standard: Within 10μm).

No.: 40

No.: 60



No.: 90



※By turning the preload adjustment screw (A) clockwise with a flathead screwdriver, the stage slides slowly, and by turning counterclockwise the stage slides quickly and smoothly.



Part Number		Stage Surface (mm)	Travel Distance (mm)	Travel per Rotation (mm)	Minimum Graduation (mm)	Travel Accuracy		Load Capacity (kgf)	Body Weight (kg)
Code	No.					Straightness(μm)	Parallelism(μm)		
EJN31	40	25×42	±12	18	0.1	30	50	9.8	0.35
	60	40×60	±21					19.6	0.68
	90	40×90	±35					29.4	0.93



Part Number		Stage Surface (mm)
Code	No.	
EJN31	40	25×42
	60	40×60

EJN31-40



Discount price	
Per	Price
1~9	100%
10~	Additional quotation



Delivery	
Per	Price
1~9	10~
10~	Additional quotation