

Leveling Casters

Plate Type Swivel Heavy Load



| Code | Bracket | | | | Wheel | | | |
|-------|-------------------|----------|-------------------|---------|-------|----------|---------------|---------|
| | Type | Material | Surface Treatment | Stopper | Code | Material | Color | Bearing |
| CXA01 | Plate Type Swivel | ADC | Powder Coated | — | NJ | Nylon | Black | Bushing |
| | | | | | UK | Urethane | Natural Color | Bushing |
| | | | | | | | | |

① The wheel material of CXA01-150-NJ is MC nylon blue.

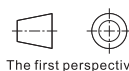
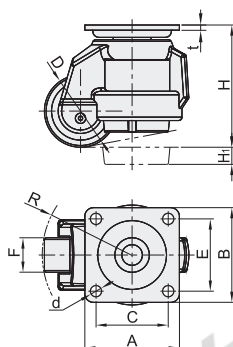
① Instructions :

- It is recommended that the load carrying capacity of the four wheels of Leveling Casters is twice that of a single load. After moving the equipment to the ideal position, adjust the block to contact ground.
- With mobile and fixed functions, not special for propelling equipment.

① When moving the Leveling Casters, the supporting rubber base should be fully off the ground. If not followed, the screw will come off and the height cannot be adjusted when the rubber base touches the ground and moving.

① Wheel color description:

Polyurethane absorbs ultraviolet or lighting light, and the color may change under natural conditions, which is a normal phenomenon but does not affect its performance. The color of the wheel should be based on the actual product.



| Part Number | | Wheel Code | D | H | H ₁ | F | A | B | C | E | d | R | t | Allowable Load (kg) | Reference Weight (kg) |
|-------------|-----|------------|------|-----|----------------|------|-----|-----|----|----|-----|-----|----|---------------------|-----------------------|
| Code | No. | | | | | | | | | | | | | | |
| CXA01 | 40 | NJ | 39.5 | 71 | 10 | 18.5 | 55 | 55 | 42 | 42 | 6.5 | 51 | 3 | 50 | 0.4 |
| | 60 | NJ | 50 | 82 | 10 | 24 | 73 | 73 | 58 | 58 | 7 | 61 | 4 | 250 | 0.8 |
| | 80 | UK | 50 | 83 | 10 | 24.2 | 73 | 73 | 58 | 58 | 7 | 61 | 4 | 250 | 1.1 |
| | 80 | NJ | 62 | 102 | 16 | 27.5 | 90 | 90 | 70 | 70 | 9 | 78 | 5 | 500 | 1.4 |
| | 80 | UK | 62 | 102 | 16 | 29.2 | 90 | 90 | 70 | 70 | 9 | 78 | 5 | 500 | 1.6 |
| | 100 | NJ | 73 | 122 | 16 | 30 | 95 | 95 | 70 | 70 | 11 | 91 | 6 | 750 | 1.9 |
| | 100 | UK | 75 | 123 | 16 | 30 | 95 | 95 | 70 | 70 | 11 | 91 | 6 | 750 | 2.1 |
| | 120 | NJ | 73 | 122 | 18 | 30 | 95 | 95 | 70 | 70 | 11 | 91 | 6 | 1000 | 2.2 |
| | 120 | UK | 75 | 123 | 18 | 30 | 95 | 95 | 70 | 70 | 11 | 91 | 6 | 1000 | 2.5 |
| | 150 | NJ | 96 | 132 | 15 | 56 | 100 | 100 | 70 | 70 | 13 | 120 | 10 | 1500 | 3.5 |
| | | UK | 90 | 129 | 15 | 55 | 100 | 100 | 70 | 70 | 13 | 120 | 10 | 1500 | 3.8 |



Please order as shown

| Part Number | | Wheel Code |
|-------------|-----|------------|
| Code | No. | |
| CXA01 | 60 | NJ UK |
| | 80 | |

CXA01—80—NJ



| Discount price | |
|----------------|---------------------------|
| Per | 1~19 20~ |
| Price | 100% Additional quotation |



| Delivery | |
|----------|---|
| | 2 |