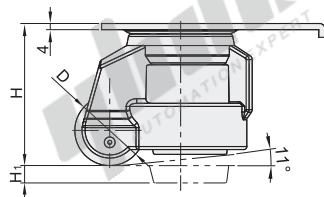


Leveling Casters

For Aluminum Extrusions Heavy Load

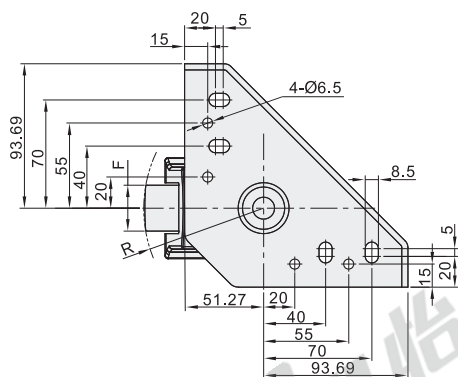
Code	Bracket				Wheel		
	Type	Material	Surface Treatment	Stopper	Wheel Code	Material	Color
CGT01	Plate Type Swivel	Q235A	Spray Paint (White)	—	N	Nylon	Black



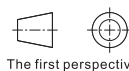
Instructions:

- It is recommended that the load carrying capacity of the four wheels of Leveling Casters is twice that of a single load. After moving the equipment to the ideal position, adjust the block to contact ground.
- With mobile and fixed functions, not special for propelling equipment.

- When moving the Leveling Casters, the supporting rubber base should be fully off the ground. If not followed, the screw will come off and the height cannot be adjusted when the rubber base touches the ground and moving.



No. 60 has no 4-Ø6.5 mounting holes.



Part Number		Wheel Code	D	H	H ₁	R	F	Applicable Aluminum Extrusions		Allowable Load (kg)	Reference Weight (kg)
Code	No.							European Standard	Chinese Standard		
CGT01	50	N	50	82	10	63	25	30/40/45/50		250	0.9
	60		61.5	103	16	80	29	40/45/50		500	1.3



Part Number		Wheel Code	D
Code	No.		
CGT01	50	N	50
	60		61.5

CGT01 — 60 — N

EX

Example



Discount price

Per	1~19	20~
Price	100%	Additional quotation



Delivery

2

