

Plate Type Swivel ▶

Medium-Heavy Load, American-Type Baseplate

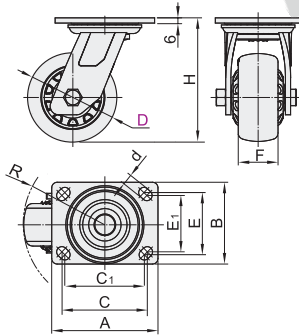
Casters

Code	Bracket					Wheel Material	Bearing	
	Type	Material	Surface Treatment	Stopper	Baseplate Standard		Swiveling Part	Wheel
CEL01	Plate Type Swivel	Q235A	*Zinc-plated Electrophoresis (Black Paint)	—	American-Type	P(Polypropylene)Beige U(Polyurethane)Orange UA(Polyurethane with Iron Core)Red N(Nylon)White	Have	Double Ball
CEL11				Hardware Side Stopper				
CEL21				Hardware Double Stopper				

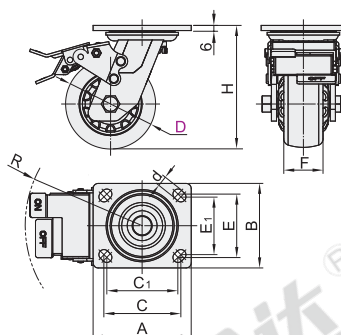
① The polyurethane wheel with the * symbol has an iron core inside.

※ When the wheel Material is P (Polypropylene) and UA (Polyurethane with Iron Core), Bracket's Surface Treatment is Zinc-plated, and the rest is black paint electrophoresis.

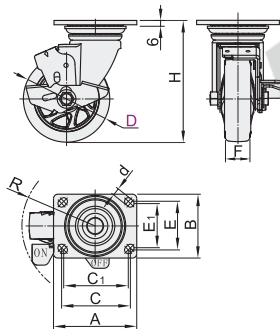
No Stopper
CEL01



Hardware Double Stopper
CEL21



Hardware Side Stopper
CEL11



Features

- The design of dual tracks arc-shaped steel inverse-bowl ensures loading and flexibility.
- The lateral side of the caster has the characteristics of impact resistance and wear resistance.
- With better resilience which makes it more labor-saving than other materials.
- Suitable on various grounds.
- Widely used in different industries.
- Operating temperature -35~80°C.
- Shore hardness of the wheel surface ≥100A.

Note

- The appearance of the active bracket is different.
- The wheel curvature and cover style are different, as well the diameter and width.
- The brake structure is same but the appearance is different.
- With same size ,the installation height and rotating radius may different.

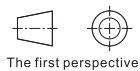
U(Polyurethane)



UA(Polyurethane with Iron Core)



N(Nylon)



The first perspective

Part Number		Wheel Material	H	F	A	B	C	E	C ₁	E ₁	d	R			Allowable Load(kg)				Weight(kg)			
Code	D											CEL01	CEL11	CEL21	P	U	UA	N	P	U	UA	N
CEL01	100	P(Polypropylene)	144									83	108	142	280	240	280	300	1.84	1.92	2.68	1.92
CEL11	125	U(Polyurethane)	165	50	118	103	92	76	76	67	11	98	112	143	340	295	350	360	1.97	2.13	3.07	2.11
CEL21	150	UA(Polyurethane with Iron Core)																				
		N(Nylon)	191									117	129	154	420	355	400	430	2.25	2.45	3.7	2.43

① When the wheel material is N(Nylon), the wheel width F=45; when the wheel material is U(Pyurethane), the wheel width F=48.



Please order as shown

Part Number		Wheel Material	H
Code	D		
CEL01	100	P	144
	125	U	165

CEL01—D100—P



Discount price
Per 1~19 20~
Price 100% Additional quotation



Delivery
2