

Casters

Plate Type Fixed

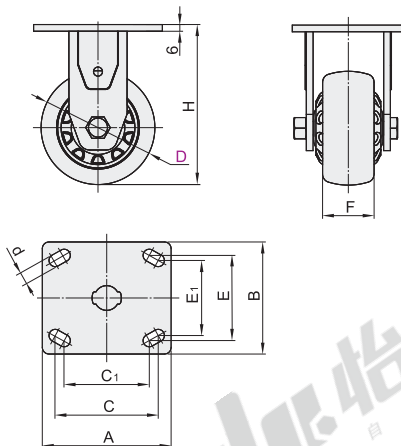
Medium-Heavy Load(American-Type Baseplate)

Code	Bracket					Wheel			Bearing	
	Type	Material	Surface Treatment	Stopper	Baseplate Standard	Wheel Code	Material	Color	Swiveling Part	Wheel
CEK01	Plate Type Fixed	Q235A	*Zinc-plated Electrophoresis (Black Paint)	—	American-Type	P	Polypropylene	Gray	None	Have
						U	Polyurethane	Orange		
						N	Nylon	Natural Color		
						UA	Polyurethane with Iron Core	Red		

Features

- The design of dual tracks arc-shaped steel inverse-bowl ensures loading and flexibility.
- The lateral side of the caster has the characteristics of impact resistance and wear resistance.
- With better resilience which makes it more labor-saving than other materials.
- It is suitable for use in relatively smooth occasions where anti-wrapping requirements are required.
- The operating temperature is -15~80°C.
- The Shore hardness of the wheel surface is 65D.

※When the wheel material is P (Polypropylene) and UA (Polyurethane with Iron Core), the surface treatment of the bracket is zinc-plated, and the rest is black electrophoresis.



P(Polypropylene)



U(Polyurethane)



N(Nylon)



Part Number		Wheel Material	H	F	A	B	C	E	C1	E1	d	Allowable Load(kg)				Weight(kg)			
Code	D											P	U	N	UA	P	U	N	UA
CEK01	100	P(Polypropylene)	144									265	280	290	280	1.36	1.43	1.45	2.4
	125	U(Polyurethane)	165	50	118	103	92	76	76	67	11	325	340	355	350	1.51	1.49	1.68	2.79
		N(Nylon)																	
	150	UA(Polyurethane with Iron Core)	191									400	380	425	400	1.76	1.98	2	3.29

① When the wheel material is N(Nylon), the wheel width is F = 45; when the wheel material is U(Polyurethane), the wheel width is F = 48.



Please order as shown

Part Number		Wheel Material	H
Code	D		
CEK01	100	P	144
	125	U	165

CEK01—D100—P



Discount price	
Per	Price
1~19	100%
20~	Additional quotation



Delivery	
Per	Price
1~19	2
20~	Additional quotation