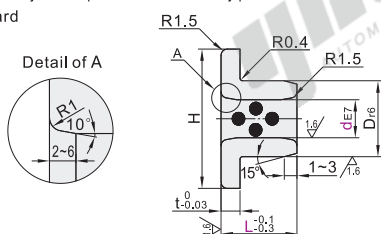


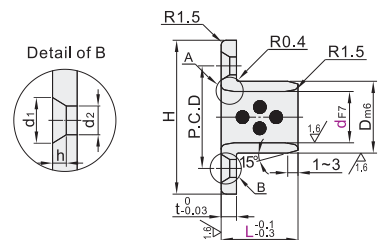
Code	Type	Material	I.D. (Tol.)	O.D. (Tol.)
OFP01	Standard	High Tensile Brass Alloy (SP2)	E7	r6
OFP02	Thrust Type Flat Head Countersunk Screw Hole	Solid Lubricant Embedded (Graphite)	F7	m6
OFP03	Low Head Screw Hole			

- Features
- Self-lubricating, maintenance-free, with a stable low friction coefficient under heavy load and low-speed movement.
 - Excellent wear-resistance, applicable for linear and rotary movement.
 - High and low temperature resistance, strong impact resistance.
 - Solid lubricant embedded in the flange of the product.
- ① The shaft diameter tolerances that match this product: d8 heavy load, e7 light load, g6 high precision (for reference only).
- ② When the product is pressed into the seat hole, put on a little lubricating oil on the end or inner wall of the seat hole, and use a hydraulic press or vise to slowly press it into the seat hole. Do not hit the product hard to avoid deformation of the product.

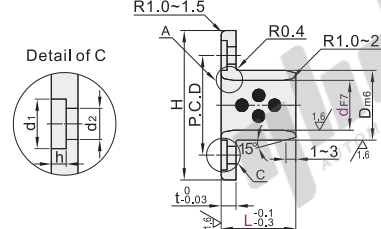
Standard OFP01



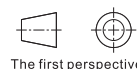
Flat Head Countersunk Screw Hole OFP02



Low Head Screw Hole OFP03



① The Tolerance of housing diameter matching with this product: H7 (for reference only).



Part Number	Code	dE7	L	Df6	H	t
6	8	+0.032 +0.026	10 12 14	12	22	
8	10	+0.040 +0.025	10 12 14 15	14	25	
10	12		10 12 14 15 20 25	16		
12	13		10 12 14 15 20 25	18	30	3
13	15	+0.050 +0.032	10 12 14 15 20 25	19		
15	16		12 14 15 20 25 30	21	35	
16	18		12 14 15 20 25 30	22	40	
18	20		14 15 20 25 30 35 40	24	45	
20	25	+0.061 +0.040	14 15 20 25 30 35 40 45	28	50	5
25	30		14 15 20 25 30 35 40 45	33		
30	35		15 20 25 30 35 40 45 50	38	55	
35	40	+0.075 +0.050	15 20 25 30 35 40 45 50	44	65	
40	50		25 30 35 40 45 50	50	70	7
50			25 30 35 40 45 50 60	62	90	8



Please order as shown



Discount price

Per 1~29 30~

Price 100% Additional quotation

Delivery

8

Standard

Part Number	Code	d	L
OFP01	8	10 12	

OFP01—d6—L10

Part Number			L	D _{m6}	OFP02								OFP03										
Code	dF7	H			Mounting Hole					t	H	Mounting Hole				Applicable Hex Socket		t					
			P.C.D	d1	d2	h	Countersunk Screw			P.C.D	d1	d2	h	Low Head Cap Screw									
Flat Head Countersunk Screw Hole OFP02	6	+0.022 +0.010	10	12	15			10	+0.015 +0.006	25	15				25	17							
	8	+0.028 +0.013	10	12	15	20		12	+0.018 +0.007	28	18				27	19	6	3.5	2.2	M3×10(2 pcs)	4		
	10		12	15	20	25		14		30	20				29	21				M4×12(2 pcs)	5		
	12		12	15	20	25		18		40	28	8.5	3.5	2.5	M3	3	36	26				M4×12(4 pcs)	
	15	+0.034 +0.016	12	15	20	25		21								39	29						
Low Head Screw Hole OFP03	16		12	15	20	25	30	35	+0.021 +0.008	50	35					40	30	7.5	4.5	3			
	18		15	20	25	30	35									42	32						
	20		15	20	25	30	35	40		28						49	38						
	25	+0.041 +0.020	15	20	25	30	35	40		33		55	40			54	43	9	5.5	3.7	M5×16(4 pcs)	6	
	30		20	25	30	35	40	45	+0.025 +0.009	38		60	45	13	6	3.5	M5	5	63	50			
	35		20	25	30	35	40	45		44		70	52				69	56	11	6.6	4.2	M6×20(4 pcs)	8
	40	+0.050 +0.025	25	30	35	40	45		50		80	60	16	7	4.5	M6	7	82	66				
50		25	30	35	40	45		62	+0.030 +0.011	100	75					8	94	78	14	9	5.2	M8×25(4 pcs)	10

① Screws need to be purchased separately.