

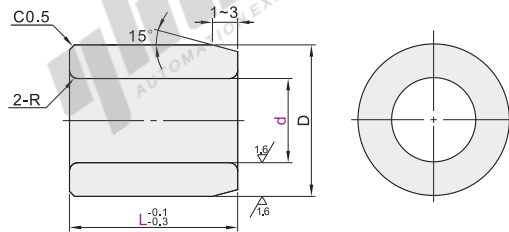
Oil-Free Bushings

- ◀ Straight, I.D. F7 O.D. m6 / I.D. E7 O.D. r6
 - ◀ Shouldered, I.D. E7 O.D. r6
- Special Copper Alloy

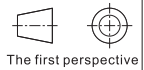
□ Straight, I.D. F7 O.D. m6 / I.D. E7 O.D. r6

Code	Type	Material	I.D. (Tol.)	O.D. (Tol.)	Allowable Temperature
OFG01	Straight	Special copper alloy	F7	m6	-30 ~ 150°C
OFG02			E7	r6	

- ① High speed and light load (under oil supply conditions).
- ② The shaft diameter tolerances that match this product are: f8, g6 (for reference only).
- ③ When the product is pressed into the seat hole, put on a little lubricating oil on the end or inner wall of the seat hole, and use a hydraulic press or vise to slowly press it into the seat hole. Do not hit the product hard to avoid deformation of the product.



- ① Ensure the bushing remains well lubricated.
- ② The Tolerance of housing diameter matching with this product: H7 (for reference only).

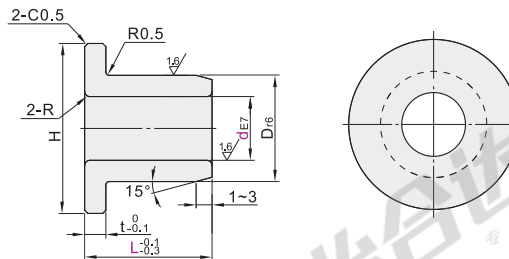


Part Number		L						Dm6	R	Part Number		L						D _{r6}	R																																																																																																																																
Code	dF7	5	6	8	10	12	15	20	9	0.5	Code	dE7	5	6	8	10	12	15	20	25	9	0.5	Code	dE7	5	6	8	10	12	15	20	25	9	1	Code	dE7	5	6	8	10	12	15	20	25	30	9	1.5	Code	dE7	5	6	8	10	12	15	20	25	30	40	50	60	30	9	1.5																																																																																			
OFG01	5	+0.022	8	10	12	15	20	9	+0.015	0.5	OFG02	5	+0.032	8	10	12	15	20	25	9	+0.028	0.5	OFG01	13	+0.034	10	12	15	20	25	30	40	19	1	OFG02	13	+0.050	10	12	15	20	25	30	40	19	1	OFG01	15	+0.016	10	12	15	20	25	30	40	50	21	+0.021	1.5	OFG02	15	+0.032	10	12	15	20	25	30	40	50	21	+0.041	1.5	OFG01	20	+0.041	15	20	25	30	40	50	28	1.5	OFG02	20	+0.040	15	20	25	30	40	50	60	28	1.5	OFG01	25	+0.020	15	20	25	30	40	50	60	33	+0.025	1.5	OFG02	25	+0.040	15	20	25	30	40	50	60	33	+0.050	1.5	OFG01	30		20	25	30	40	50	60	38	+0.009	1.5	OFG02	30		20	25	30	40	50	60	38	+0.034	1.5

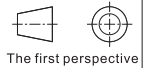
□ Shouldered, I.D. E7 O.D. r6

Code	Type	Material	I.D. (Tol.)	O.D. (Tol.)	Allowable Temperature
OFG31	Shouldered	Special copper alloy	E7	r6	-30 ~ 150°C

- ① High speed and light load (under oil supply conditions).
- ② The shaft diameter tolerances that match this product are: f8, g6 (for reference only).
- ③ When the product is pressed into the seat hole, put on a little lubricating oil on the end or inner wall of the seat hole, and use a hydraulic press or vise to slowly press it into the seat hole. Do not hit the product hard to avoid deformation of the product.



- ① Ensure the bushing remains well lubricated.
- ② The Tolerance of housing diameter matching with this product: H7 (for reference only).



Part Number		L						D _{r6}	H	t	R
Code	dE7	5	6	8	10	12	15	9	2	0.5	
OFG31	5	+0.032	10	12	15	20	9	+0.028	14	0.5	
	6	+0.020	10	12	15	20	10	+0.019	16		
	8	+0.040	10	12	15	20	12		20		
	10	+0.025	10	12	15	20	25	30	14		+0.034
	12		10	12	15	20	25	30	18		+0.023
	13	+0.050	10	12	15	20	25	30	19		25
	15	+0.032	10	12	15	20	25	30	21		+0.041
	16		12	15	20	25	30	40	22		+0.028
	20		12	15	20	25	30	40	30		40
	25	+0.061	20	25	30	40	50	35	+0.050		45
30	+0.040	25	30	40	50	40	+0.034	50	50		

□ Shouldered

Part Number		L					
Code	d	5	6	8	10	12	15
OFG31	d5	10	12	15	20	25	30

OFG31 — d5 — L10



● Discount price
Per 1~29 30~
Price 100% Additional quotation

Delivery
8