



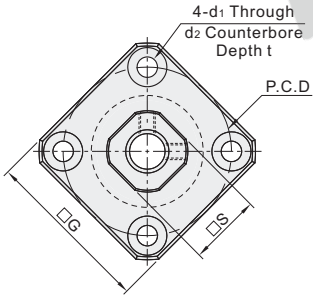
Code	Type	Material		Surface Treatment
		② ④ ⑥	⑤	② ④ ⑤ ⑥
LEB01	Precision Type Fixed Side	S45C	SUJ2	Black Oxide

Constituting Parts

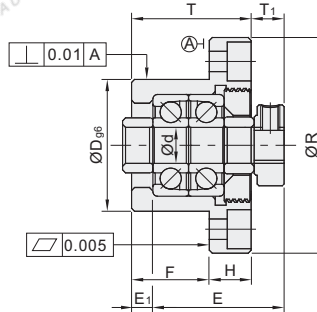
No.	Part Name	Qty.
①	Oil Seal (Ø6~8 1pc.)	2
②	Bearing Housing	1
③	Angular Contact Bearing Class 5	1 Set
④	Cover	1
⑤	Collar	2
⑥	Clamping Nut	1
⑦	Set Screw (with copper sheet)	2

- ① Do not disassemble ②, ③ and ④, as they must remain assembled.
- ② Bearing is filled with low particle generation grease.
- ③ Uses the preloaded JIS 5 class Angular Contact Bearings. It is recommended to use for high-accuracy and high-speed precision applications.

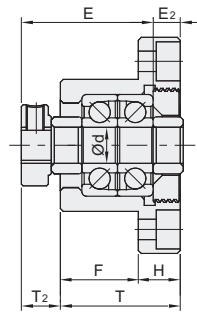
d6~8



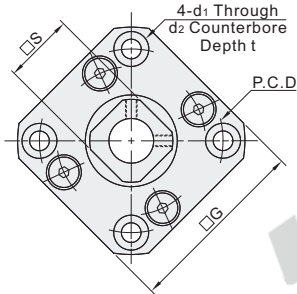
Installation Method A



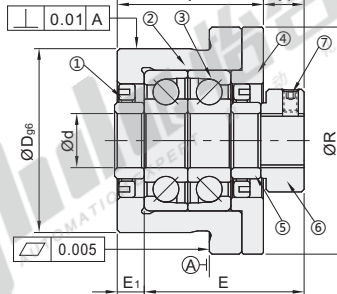
Installation Method B



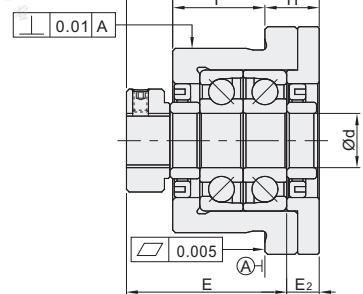
d10~30



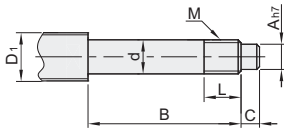
Installation Method A



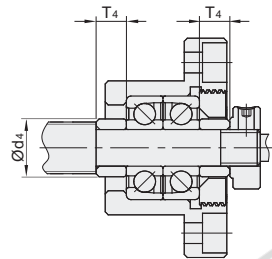
Installation Method B



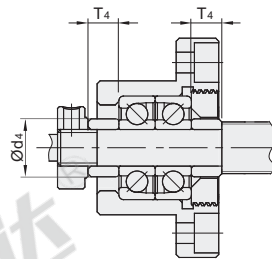
Advise Shaft End Machining Dimensions



Installation Method A



Installation Method B



Part Number	Code	No.	Ød	T	H	F	E	ØDg6	R	P.C.D	G	Installation Method A		Installation Method B		Ød1	Ød2	t	S	Shaft diameter for oil seal Ød4	Advise shaft end machining dimensions							
												T1	E1	T2	E2						Ball Screws Shaft Dia			Shaft end O.D.			Nominal Thread	Collar Length Size
																					ØD1	Ød	ØA	B	C	M		
LEB01	6	6B	6	20	7	13	22	22 ^{+0.007} _{-0.020}	35	28	28	5.5	3.5	6.5	4.5	2.9	5.5	3.5	12	9.4	8	6 ^{-0.007} _{-0.020}	4	28	8	M6×P0.75	8	5
		8	8	23	9	14	26	28 ^{+0.007} _{-0.020}	43	35	35	7	4	8	5	3.4	6.5	4	14	11.4	10/12	8 ^{-0.005} _{-0.012}	8	32	9	M8×P1.0	10	5.5
	10	10	27	10	17	29.5	34 ^{+0.009} _{-0.025}	52	42	42	7.5	5	8.5	6	4.5	8	4	16	14.4	12/14/15	10 ^{-0.005} _{-0.012}	8	36	15	M10×P1.0	11	5.5	
	12	12	27	10	17	29.5	36 ^{+0.009} _{-0.025}	54	44	44	7.5	5	8.5	6	4.5	8	4	19	15.4	14/15/16	12 ^{-0.005} _{-0.012}	10	36	15	M12×P1.0	11	5.5	
	15	15	32	15	36	40 ^{+0.009} _{-0.025}	63	50	52	10	6	12	8	5.5	9.5	6	22	20	18/20	15 ^{-0.005} _{-0.014}	12	47	20	M15×P1.0	13	10		
	20	20	52	22	30	50	57 ^{+0.010} _{-0.029}	85	70	68	8	10	20	14	6.5	11	10	30	25.4	25/28/30	20 ^{-0.005} _{-0.014}	17	62	25	M20×P1.0	17	11	
	25	25	57	27	30	60	63 ^{+0.009} _{-0.029}	98	80	79	13	10	20	17	9	15	13	35	31.4	30/32/36	25 ^{-0.005} _{-0.014}	20	75	30	M25×P1.5	22	15	
	30	30	62	30	32	61	75 ^{+0.010} _{-0.029}	117	95	93	11	12	17	18	11	17.5	15	40	37.4	36/40	30 ^{-0.005} _{-0.015}	25	72	38	M30×P1.5	25	9	



Part Number		Code	No.	Ød
LEB01	6			
LEB01	8	8	8	8

LEB01 — 6



Discount price	
Per	1~9 10~
Price	100% Additional quotation



Delivery	
	2