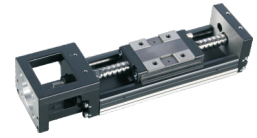
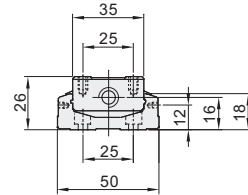
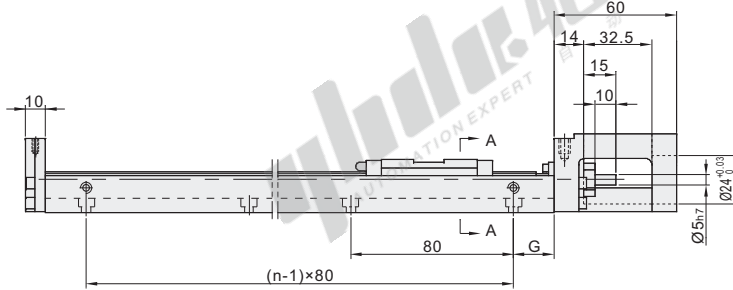


Economical Type KK Single Axis Drivers

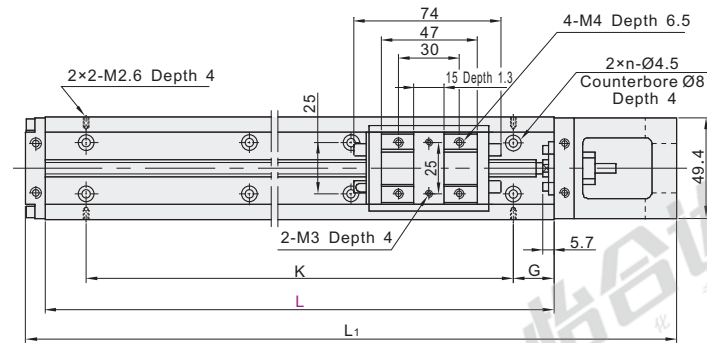
50 Series, Standard Type Without Cover



Code	Type	Ball Screw Lead	Slider			Base			Motor Support	
			Material	Material	Hardness	Material	Surface Treatment	Material	Surface Treatment	
KK50A	Servo Motor Type	2	Alloy Steel	Chrome Molybdenum Steel	58-62 HRC	Aluminum Alloy	Black Anodize			



Cross Section A-A



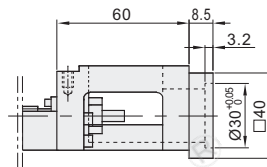
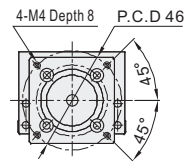
The first perspective

Part number Code	No.	Rail Length L	Number of Slider	Accuracy Grade	Motor Connection Support Selection	Limit Switch/ Installation Rail Selection	Ball Screw Shaft Dia.	Lead	Length of Workbench L ₁	G	n	K	Maximum Stroke	Weight(kg)		
													Single Slider	Dual Slider	Single Slider	Dual Slider
KK50A	802	150*					8	2	220	35	2	80	70	—	1	—
		200	1(Single Slider)	C(Normal Grade)	F1	No Sign: (No) S0 (Switch Rail Only) S1 (Switch Rail+ SX671) S2 (Switch Rail+ SX674)			270	20	3	160	120	55	1.2	1.4
		250	2(Dual Slider)	P(Precision Grade)	F2				320	45	3	160	170	105	1.4	1.6
		300							370	30	4	240	220	155	1.6	1.8

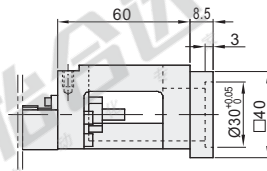
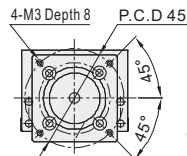
① The rail length with * is not suitable for dual block.

② Motor connecting flange and motor correspondence table

Motor Connection Support : F1



Motor Connection Support : F2



Code	Applicable Motor Type	Motor Connection Flange Support	Applicable Brand		Output Power
			Name of Manufactory	No.	
KK50A	Servo Motor	F1	Mitsubishi Electric	HC-PQ033	30W
				HC-PQ053	50W
				HC-PQ13	100W
				HC-KFS053	50W
				HC-KFS13	100W
			Yaskawa Electric	SGMAH-A3	30W
				SGMAH-A5	50W
				SGMAH-01	100W

Code	Applicable Motor Type	Motor Connection Flange Support	Applicable Brand		Output Power
			Name of Manufactory	No.	
KK50A	Servo Motor	F2	Panasonic	MSM3AZ	30W
				MSM5AZ	50W
				MSM01	100W



The first perspective

Limit Switch/Installation Switch Rail Dimension Table

S0(Switch Rail)

S1(Switch Rail+ SX671)

S2(Switch Rail+ SX674)

Code	Limit Switch/Installation Rail	a	b	c	d
KK50A	S1(Switch Rail+ SX671)	45.5	59	1	10
	S2(Switch Rail+ SX674)	41.3	48	1	10.5

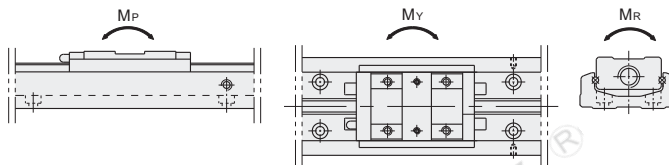
The first perspective

Accuracy Grade

Code	Rail Length L	Repeated Positioning Accuracy		Positioning Accuracy		Running Parallelism		Maximum Starting Torque(N-cm)	
		Normal Grade	Precision Grade	Normal Grade	Precision Grade	Normal Grade	Precision Grade	Normal Grade	Precision Grade
KK50A	150	±0.01	±0.003	—	0.020	—	0.010	2	4
	200								
	250								
	300								

Allowable Static Torque

Code	Accuracy Grade	Allowable Static Torque					
		Linear Guide Rail					
		Pitching M_p (N-m)		Yawing M_y (N-m)		Rolling M_R (N-m)	
		Single Slider	Dual Slider	Single Slider	Dual Slider	Single Slider	Dual Slider
KK50A	Normal Grade	116	278	116	278	222	444
	Precision Grade						



Allowable Load

Code	Accuracy Grade	Basic Load Rating(N)			
		Ball Screw		Linear Guide Rail	
		C(Dynamic)	Co(Static)	C(Dynamic)	Co(Static)
KK50A	Normal Grade	1813	2910	8007	12916
	Precision Grade	2136	3489		

Part number	Rail Length	Number of	Precision	Motor Connection	Limit Switch/
Code	No.	Slider	Grade	Support Selection	Installation Rail Selection
KK50A	802	1	1 (Normal Grade) 2 (Precision Grade)	F1 F2	No Sign: (No) S0 (Switch Rail Only) S1 (Switch Rail+ SX671)

KK50A - 802 - L150 - 1 - C - F1 - S1



Discount price		
Per	1~9	10~
Price	100%	Additional quotation



Normal Grade, Single Slider(1~5 pcs)