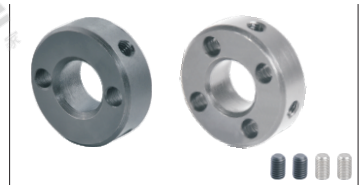


Shaft Collars

- 2-Hole/4-Hole Type
- 2-Tapped(Coarse)/4-Tapped(Coarse) Type
- Set Screw Type

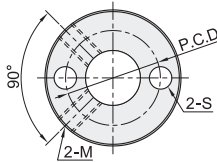
2-Hole / 4-Hole

Code		Material		Surface Treatment	Accessories
2-Hole	4-Hole	GB	Equiv.		
FAC41	FAC71	45	S45C	Black Oxide	Set Screw 2 pcs.
FAC42	FAC72			Fine Sandblasting Electroless Nickeling	Set Screw 2 pcs.
FAC46	FAC76			0Cr18Ni9	SUS304

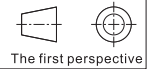
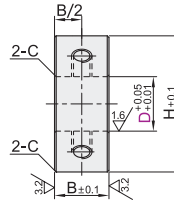
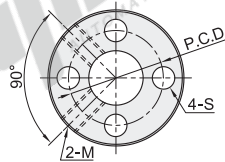


- 1 If there is requirement of rust prevention, please choose stainless steel materials or electroless nickel-plated products firstly.
- 2 Due to the different production batches of products, nickel plated products may have fine sand blasting, which does not affect the size and function.
- 3 Due to different production batches, the fine sandblasted electroless nickeled products may not be sandblasted when shipped, which does not affect the size and function.

2-Hole
FAC41/42/46



4-Hole
FAC71/72/76



Part Number		B	H	S	P.C.D	C	Set Screw M×Length
Code	D						
2-Hole FAC41 FAC42 FAC46	6	10	22	4.5	15	0.6	M4×4
	8		24		16		
	10		26		18		
	12		32		22		
	13		33		23		
4-Hole FAC71 FAC72 FAC76	15	12	35	6.6	25	1	M5×5
	16		40		28		
	18		44		32		
	20		49		37		
	25		54		42		
	30						



Part Number	B
Code	D
FAC41	12
FAC42	13
FAC46	15

FAC42 — D12



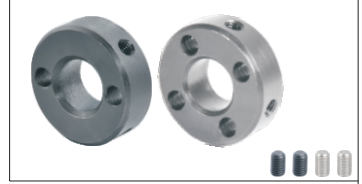
Discount price
Per 1~10 11~
Price 100% Additional quotation



Delivery
6

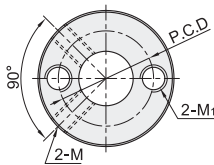
2-Tapped/4-Tapped

Code		Material		Surface Treatment	Accessories
2-Tapped	4-Tapped	GB	Equiv.		
FAC51	FAC81	45	S45C	Black Oxide	Set Screw 2 pcs.
FAC52	FAC82			Fine Sandblasting Electroless Nickeling	Set Screw 2 pcs.
FAC56	FAC86			0Cr18Ni9	SUS304

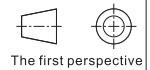
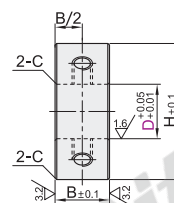
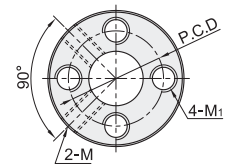


- 1 If there is requirement of rust prevention, please choose stainless steel materials or electroless nickel-plated products firstly.
- 2 Due to the different production batches of products, nickel plated products may have fine sand blasting, which does not affect the size and function.
- 3 Due to different production batches, the fine sandblasted electroless nickeled products may not be sandblasted when shipped, which does not affect the size and function.

2-Tapped
FAC51/52/56



4-Tapped
FAC81/82/86



Part Number		B	H	M1	P.C.D	C	Set Screw M×Length
Code	D						
2-Tapped FAC51 FAC52 FAC56	6	10	22	M3	15	0.6	M4×4
	8		24	M4	16		
	10		26		18		
	12		32		22		
	13		33	M5	23		
4-Tapped FAC81 FAC82 FAC86	15	12	35	M6	25	1	M5×5
	16		40		28		
	18		44		32		
	20		49		37		
	25		54		42		
	30						



Part Number	B
Code	D
FAC51	12
FAC52	13
FAC56	15

FAC52 — D12



Discount price
Per 1~10 11~
Price 100% Additional quotation



Delivery
6