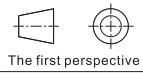
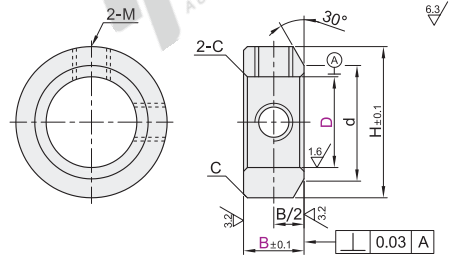


Standard Type / Wide Type

Code	Type		Material		Surface Treatment	Accessories
			GB	Equiv.		
FAB01	Set Screw Type	Standard Type	45	S45C	Black Oxide	Set Screw 2 pcs.
FAB02			0Cr18Ni9	SUS304	Fine Sandblasting Electroless Nickeling	Set Screw 2 pcs. (Stainless Steel)
FAB06			LY11	A2017	—	Set Screw 2 pcs. (Stainless Steel)
FAB21			—	—	—	Set Screw 2 pcs. (Stainless Steel)
FAB22			—	—	—	Set Screw 2 pcs. (Stainless Steel)
FAB23			—	—	—	Set Screw 2 pcs. (Stainless Steel)
FAB51	Wide Type	Wide Type	45	S45C	Black Oxide	Set Screw 2 pcs.
FAB52			0Cr18Ni9	SUS304	Fine Sandblasting Electroless Nickeling	Set Screw 2 pcs. (Stainless Steel)
FAB56			—	—	—	Set Screw 2 pcs. (Stainless Steel)

- ① If there is requirement of rust prevention, please choose stainless steel materials or electroless nickel-plated products firstly.
- ② Due to the different production batches of products, nickel plated products may have fine sand blasting, which does not affect the size and function.
- ③ Due to different production batches, the fine sandblasted electroless nickleled products may not be sandblasted when shipped, which does not affect the size and function.



Standard Type

Part Number	D	B	H	d	C	Set Screw M×Length
(S45C)	6	6 8 10	12 11			
FAB01	8	6 8 10	14 12	0.3		M4×3
FAB02	10	6 8 10	16 13			
FAB06	12	6 8 10 12	20 15			
(SUS304)	13	8 10 12	22 18			M5×4 (Only B6)
FAB06	15	8 10 12	24 20	0.6		M4×3
FAB21	16	8 10 12 15	26 22			
(A2017)	18	10 12 15	32 27			M6×5 (Only B8)
FAB21	20	10 12 15				M5×4
FAB22	25	12 15 18	38 31			
FAB23	30	15 18 20	46 38	0.8		M8×6

Wide Type

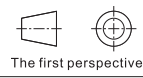
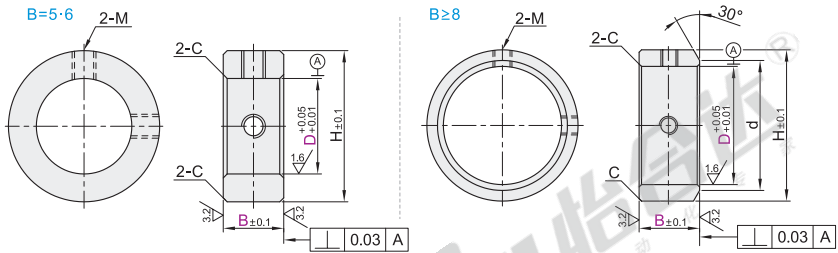
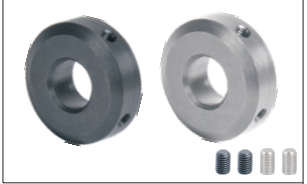
Part Number	D	B	H	d	C	Set Screw M×Length
(S45C)	6	6 8	15 15			
FAB01	8	8 10	16 16			
FAB02	10	8 10	18 13			M4×4
FAB06	12	8 10	20 16			
(SUS304)	13	8 10 12	22 20			
FAB06	15	8 10 12	26 20	0.6		M5×5
FAB21	16	8 10 12	28 22			M4×4
FAB22	18	10 12 15	32 26			
FAB23	20	10 12 15	36 28			
FAB51	25	12 15 18	42 38			M6×6
FAB52	30	15 18 20	48 42	0.8		M8×8

- ① 30° chamfering is not available for Wide Type D6.

Compact Type

Code	Type		Material		Surface Treatment	Accessories
			GB	Equiv.		
FAC01	Set Screw Type	Compact Type	45	S45C	Black Oxide	Set Screw 2 pcs.
FAC02			0Cr18Ni9	SUS304	Fine Sandblasting Electroless Nickeling	Set Screw 2 pcs. (Stainless Steel)
FAC06			—	—	—	Set Screw 2 pcs. (Stainless Steel)

- ① If there is requirement of rust prevention, please choose stainless steel materials or electroless nickel-plated products firstly.
- ② Due to the different production batches of products, nickel plated products may have fine sand blasting, which does not affect the size and function.
- ③ Due to different production batches, the fine sandblasted electroless nickleled products may not be sandblasted when shipped, which does not affect the size and function.



Part Number	D	B	H	d	C	Set Screw M×Length
FAC01	6		12			
FAC02	8	5	14		0.3	M3×3
FAC06	10		16			
FAC01	12		19			
FAC02	15	6	22		0.6	M4×3
FAC06	20	8	27.5	22.5		
FAC01	25	10	32	27.5		
FAC02	30	12	39	32.5	0.8	M5×4
FAC06			41			M6×5

Compact Type

Part Number	D	B
FAC01	6	5
FAC02	8	5

FAC02 — D6 — B5



Discount price
Per 1~10 11~
Price 100% Additional quotation

Delivery
6