

# Silicon Rubber, Urethane Molded Bearings with Threaded Shaft

## Standard/Long Cylindrical Type

Code		Type	Bearing Material		Lining		Shaft Material
Standard	Long		GB	Equiv.	Material	Hardness Color	
BAN01	BAN21	Cylindrical Type	GCr15	SUJ2	Urethane	Shore A90 Black	SUS303
BAN02	BAN22					Shore A70 White	
BAN03	BAN23					Shore A70 Black	
BAN04	BAN24				Silicon Rubber	Light Gray	
BAN05	BAN25				Antistatic Urethane	Gray	
BAN06	BAN26		9Gr18Mo	SUS440C	Urethane	Shore A90 Black	
BAN11	BAN31					Shore A70 White	
BAN12	BAN32					Shore A70 Black	
BAN13	BAN33				Silicon Rubber	White	
BAN14	BAN34				Silicon Rubber	Light Gray	
BAN15	BAN35						



□ Bearing Accuracy : GB/T 307.1 Class 6  
Equiv. : JIS B 1514 Class 6

□ Properties of Antistatic Urethane

Item	Increment	Parameter
Specific Volume Resistivity	Ω.cm	$2.1 \times 10^9$
Surface Resistivity	Ω	$4.0 \times 10^9$

□ Listed values are not guaranteed values but an example of measured values.

□ Urethane (white) may turn yellow with age. Please refer to the actual product color.

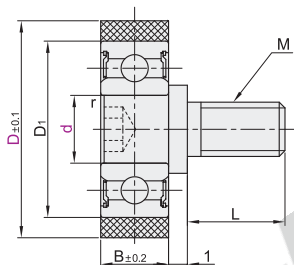
□ Product features

- Bolts are installed on the bearings, anti-shedding parts are not required, can be installed and used directly ;
- External thread bolts can be selected as external thread type or external thread extension type base on needs ;
- The bearing and the external threaded bolt are joined together, anti-shedding parts are not required, which is easy to install.

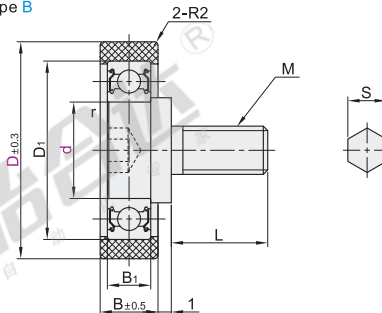
□ Notes

- The thread root with incomplete thread part, please pay attention when installing.
- The thread head may exceed the bearing end face, the protruding length range cannot be guaranteed.
- Pay attention to the rust prevention and maintenance of metal materials and their surface treatment
- If there is a requirement for rust prevention, please preferentially choose the specifications which both with the bearing and the shaft are made of stainless steel.
- When installing the bearing, if you touch the product directly with your hands, please spray anti-rust oil in time after installation to prevent the product from being corroded and rusted by sweat.

Shape A

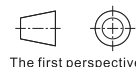


Shape B



□ Please refer to the actual product.

□ There is no undercut machining on the threaded part.



Part Number		d	D	M	L		Allowable Load(N)			B	D1	B1	r (min.)	S	Bearing Used
Code	Shape				Standard	Long	Urethane Shore A90	Silicon Rubber Shore A90	Silicon Rubber Shore A70						
Standard	Shape A	3	10	M3	4	6	25	8	7	3	7		0.1	1.5	BAF683ZZ
			12				34	10	9.8						BAF683ZZ
			13				44	13	13						BAF684ZZ
		4	16	M4	5	8	59	16	18	5	13		0.2		BAF624ZZ
			20				78	20	24						BAF685ZZ
		5	20				23	23			16		0.3	2.5	BAF625ZZ
			28				44	44							BAF696ZZ
		6	28				157	42	47	6	19		0.2		BAF626ZZ
			30				81	81							BAF608ZZ
		8	30	M6	8	12	176	94	53	7	22		0.3	4	BAF608ZZ
			40				136	122	82						BAY6000ZZ
	Shape B	10	40				274	136		9	30		0.6	5	BAY6200ZZ
			45				109	109							BAY6002ZZ
		15	45				343	130	103	11	35		0.3		BAY6202ZZ
			55				490	225	145						BAY6904ZZ
		20	55	M10	12	20	750	333	220	15	52		1	8	BAY6204ZZ
			65				81	81							BAY6205ZZ
		25	65				176	94	53	11	26	7	0.3	4	BAF608ZZ
			30				136	122	82						BAY6000ZZ
		10	40	M6	8	12	274	136		12	32	9	0.6	5	BAY6200ZZ
			45				109	109							BAY6002ZZ
		15	45				343	130	103	12	37	9	0.3		BAY6202ZZ
			55				485	220	145						BAY6904ZZ
		20	55	M10	12	20	745	330	220	19	52	15	1	10	BAY6204ZZ
			65												BAY6205ZZ

□ The allowable load is a reference value.

□  $kgf = N \times 0.101972$



Part Number		D
Code	Shape	
BAN01	Shape A	3
BAN02	Shape A	4
BAN01	A—d3—D12	



Discount price	Per	1~19	20~
Price 100%	Additional quotation		

□ Urethane (Shore A70)



Discount price	Per	1~9	10~
Price 100%	Additional quotation		

□ Others



Delivery	6
----------	---