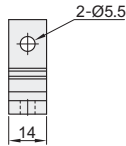
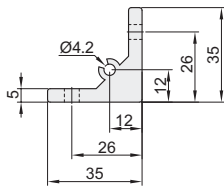


Extruding angle plate

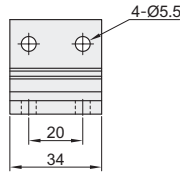
Code	Type	Material	Surface Treatment
ABC01-206	Extruding Angle Plates	A6063-T5	Sandblast Oxidation

- ① Used for external connection of the extrusion at a fixed angle, and the sealing plate can be fixed.
- ② According to the design requirements, the hole distance and length can be processed according to drawings.
- ③ This series of extruding angle plates is not suitable for AOB05-2550.

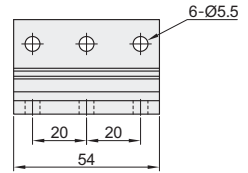
ABC01-206-35-14



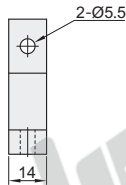
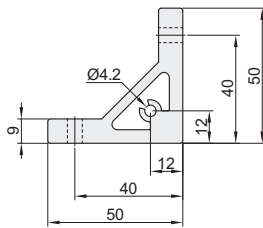
ABC01-206-35-34



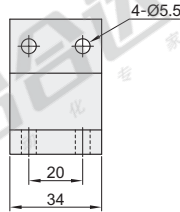
ABC01-206-35-54



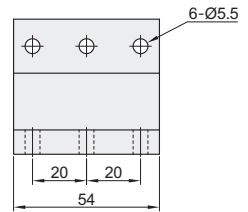
ABC01-206-50-14



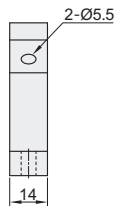
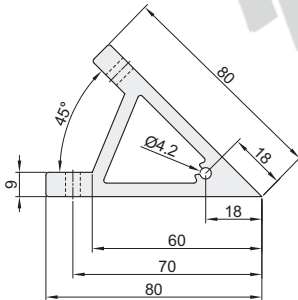
ABC01-206-50-34



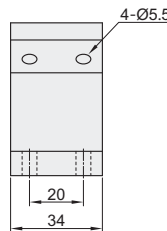
ABC01-206-50-54



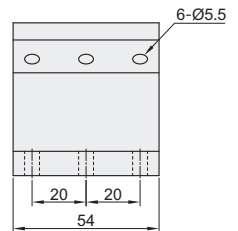
ABC01-206-80A-14



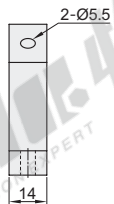
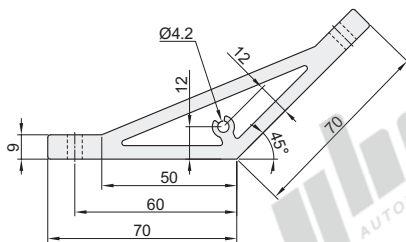
ABC01-206-80A-34



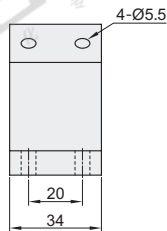
ABC01-206-80A-54



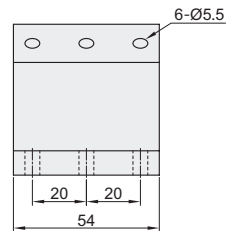
ABC01-206-70-14



ABC01-206-70-34



ABC01-206-70-54



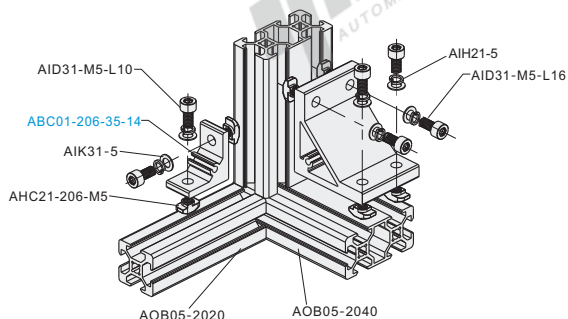
Code	Weight (g/pcs)
ABC01-206-35-14	14.4
ABC01-206-35-34	35.2
ABC01-206-35-54	56
ABC01-206-50-14	28
ABC01-206-50-34	69
ABC01-206-50-54	109

Code	Weight (g/pcs)
ABC01-206-80A-14	40.5
ABC01-206-80A-34	96
ABC01-206-80A-54	152
ABC01-206-70-14	46.6
ABC01-206-70-34	116
ABC01-206-70-54	185

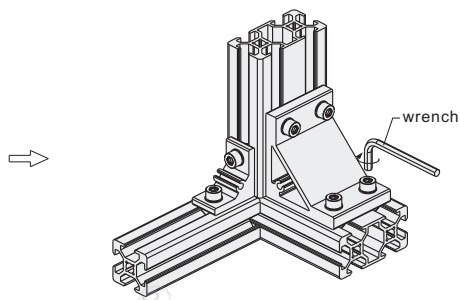


Example

Exploded drawing



Assembly drawing



Please order as shown

Code
ABC01-206-70-14
ABC01-206-70-34

Optional processing

Part number	Optional processing code	Part number	Optional processing code
ABC01-206-70-14	SET-OB	ABC01-206-70-34	SET-OB
ABC01-206-70-34	SET-OB	ABC01-206-70-34	SET-OB
ABC01-206-70-14-S		ABC01-206-70-14-S-SET-OB	

Add processing project	Code	Spec.
Panel mounting threaded hole processing	S	<p>Machine the threaded holes for mounting the panel on the side of the angle plates(single-side M5 threaded holes)</p> <p>Threaded hole position</p>
Equipped with suitable bolts, T-nuts, washer and spring washer	SET-OB	<p>When specifying the SET, it is equipped with bolts, nuts, and washers to fix the angle plates on the extrusion.</p> <p>Bolt: AID31-M5-L10 T nut: AHC21-206-M5 Washer: AIK31-5 Spring washer: AIH21-5</p>

Note: According to the different angle plates thicknesses, different specifications of bolts are equipped.