

Die-cast angle plates

Code	Type	Material	Surface Treatment
ABB11-206	Die-cast angle plates	ADC12	Sandblasting/Grinding

Used for reinforcement of external connection and internal connection of extrusion fixed angle.

Place the nut in the extrusion groove, and fasten the angle plate with the extrusion with bolts.

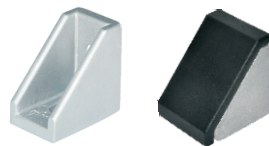


ABB11-206-2020

Surface Treatment: Sandblasting

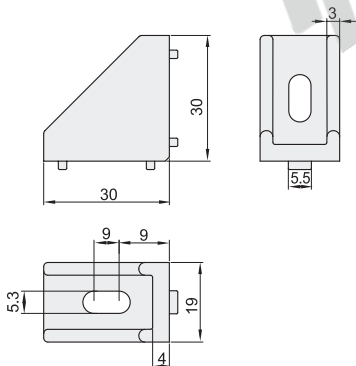
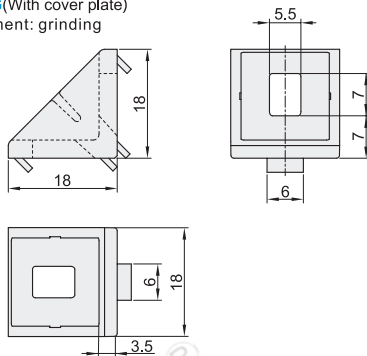


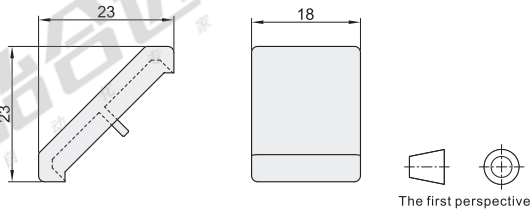
ABB11-206-2020G(With cover plate)

Surface Treatment: grinding



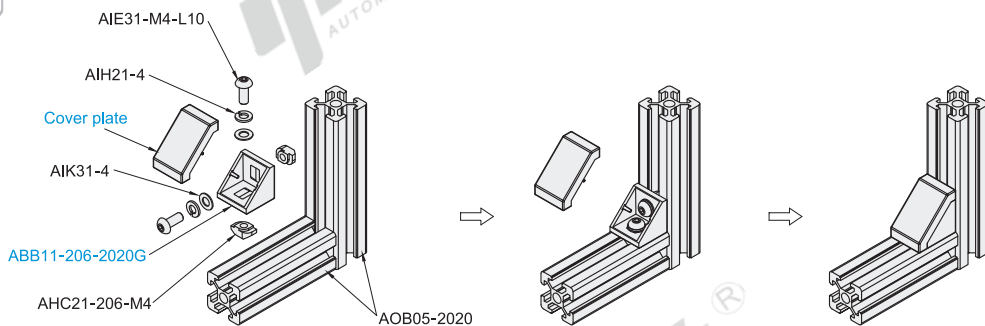
Code	Weight (g/pcs)
ABB11-206-2020	16
ABB11-206-2020G	

Cover plate(matching purpose)



Exploded drawing

Assembly drawing



Code
ABB11-206-2020
ABB11-206-2020G



Optional processing

Part number	Optional processing code
ABB11-206-2020	SET-OB
ABB11-206-2020G	S

ABB11-206-2020-SET-OB

Code ABB11-206-2020-SET-OB
ABB11-206-2020G-SET-OB

Add processing project	Code	Spec.
Panel mounting threaded hole processing	S	<p>Machining the threaded holes for mounting the panel on the side of the angle plates(single-side M5 threaded holes) Threaded hole position</p>
Equipped with suitable bolts, T-nuts, washer and spring washer	SET-OB	<p>When specifying the SET, it is equipped with bolts, nuts, and washers to fix the angle plates on the extrusion. Bolt: AIE31-M4-L10 T nut: AHC21-206-M4 Washer: AIK31-4 Spring washer: AIH21-4</p>